

About cracks imaging in cementitious materials

D. BERNARD

ICMCB-CNRS, Univ. Bordeaux

PESSAC, FRANCE



INTRODUCTION

OUTLINE

- **Example 1**
- **Example 2**
- **Discussion**
- **Conclusion**

EXAMPLE 1

About microcracking due to leaching in
cementitious composites:

X-ray microtomography description and numerical
approach

T. Rougelot, N. Burlion , D. Bernard, F. Skoczylas
Cement and Concrete Research 40 (2010) 271–283

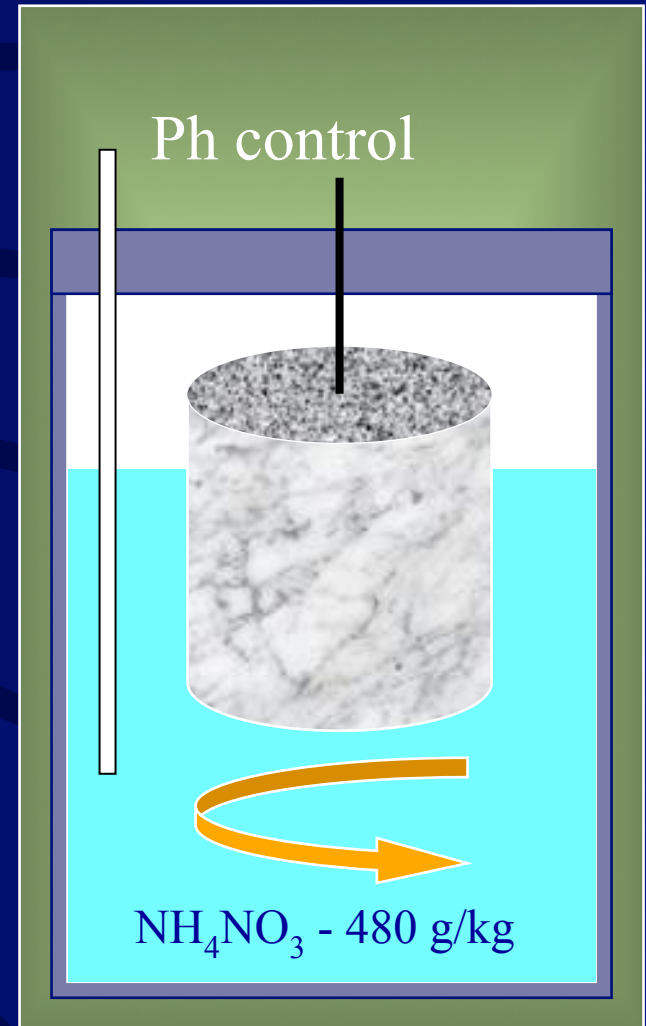
Sample preparation and leaching process

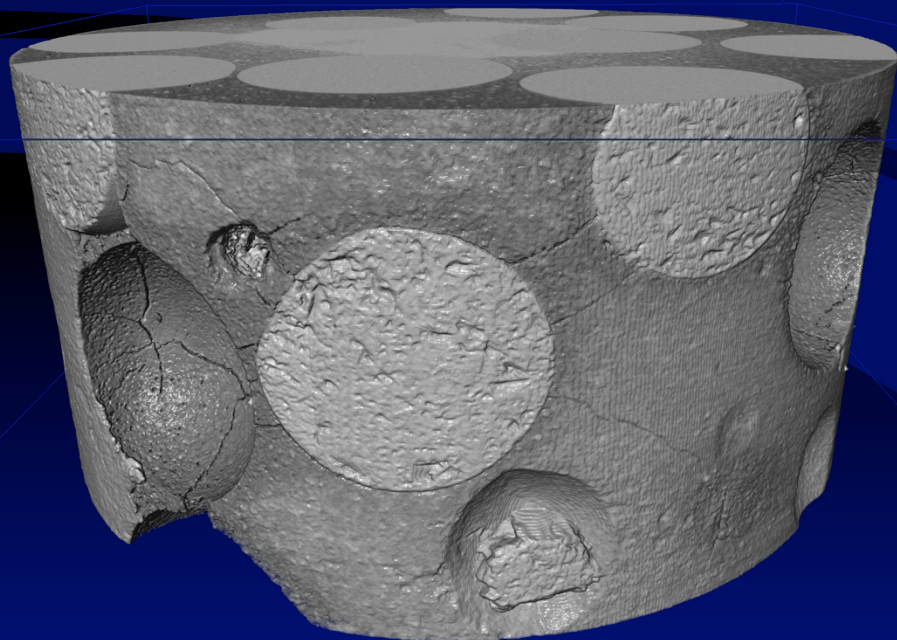
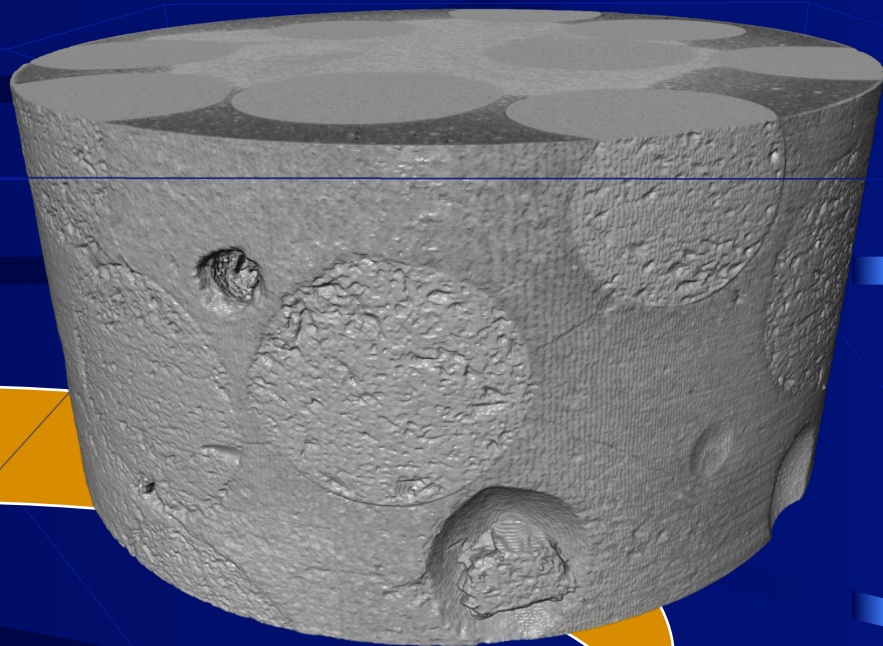
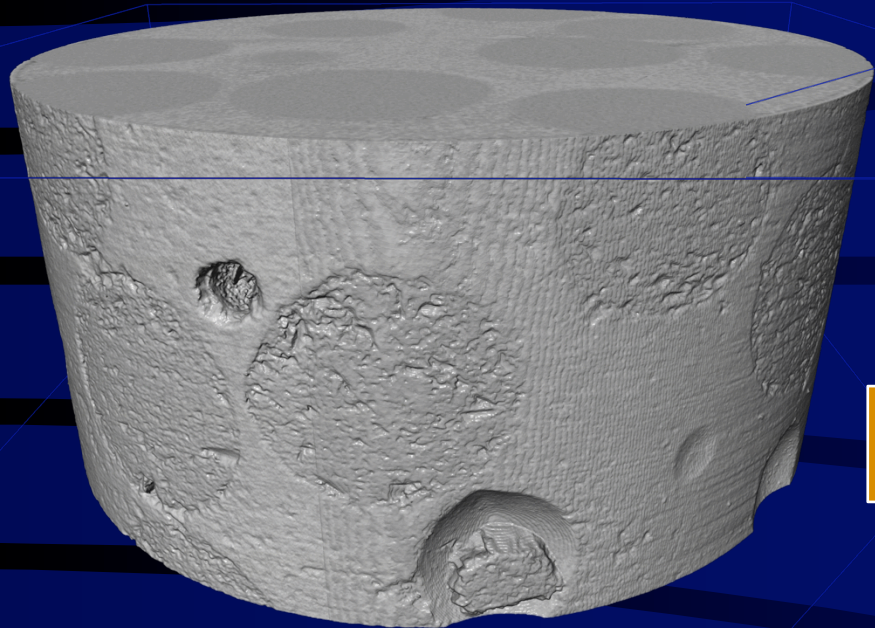
Components	Quantity
Glass beads Different sizes	1350 kg/m ³
Cement CEM II/B 32,5 R*	450 kg/m ³
Water	225 kg/m ³
Water/Cement ratio	0.5



6 months in water at 20°C

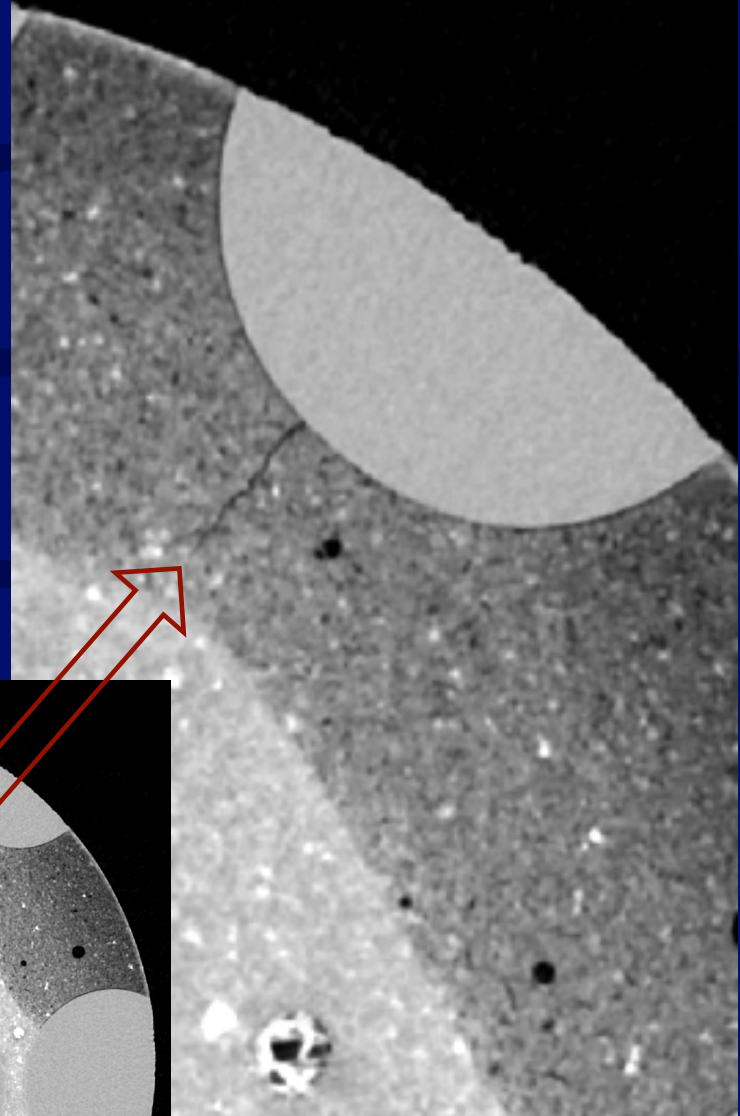
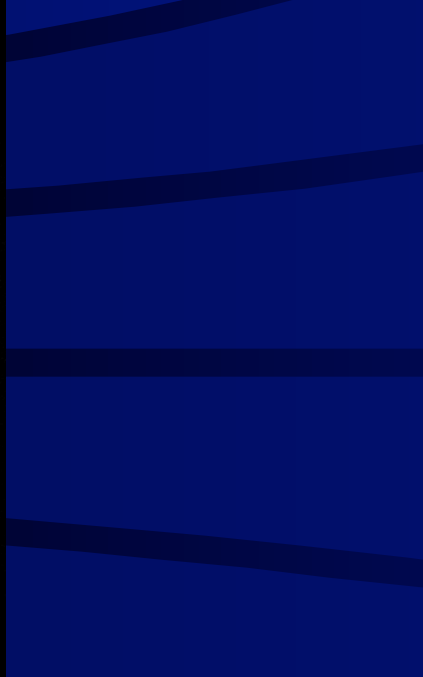
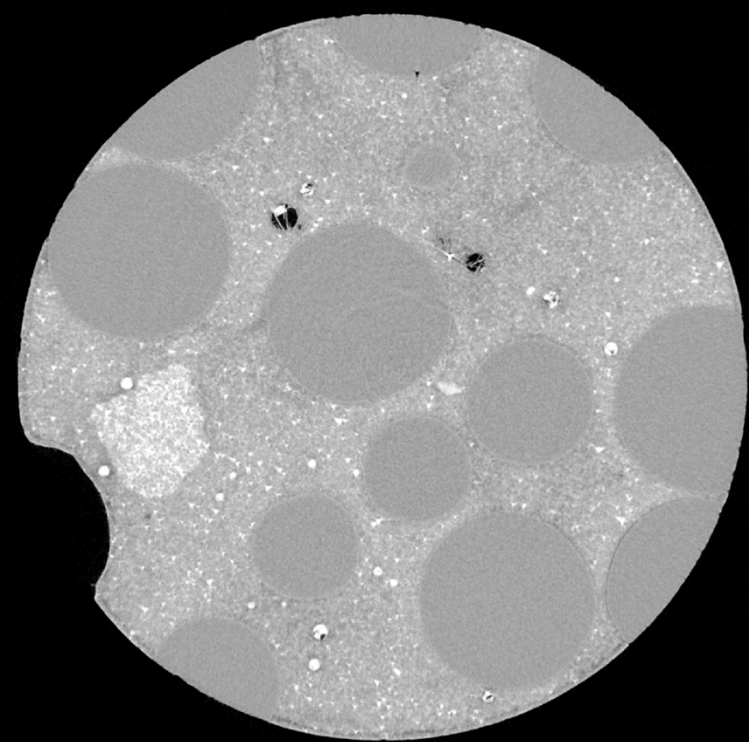
Sample preparation and leaching process



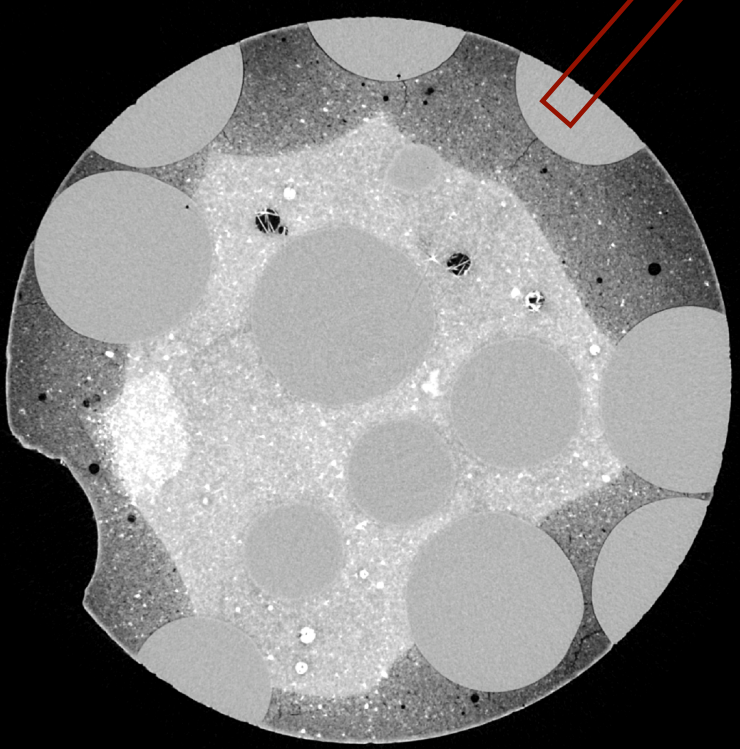


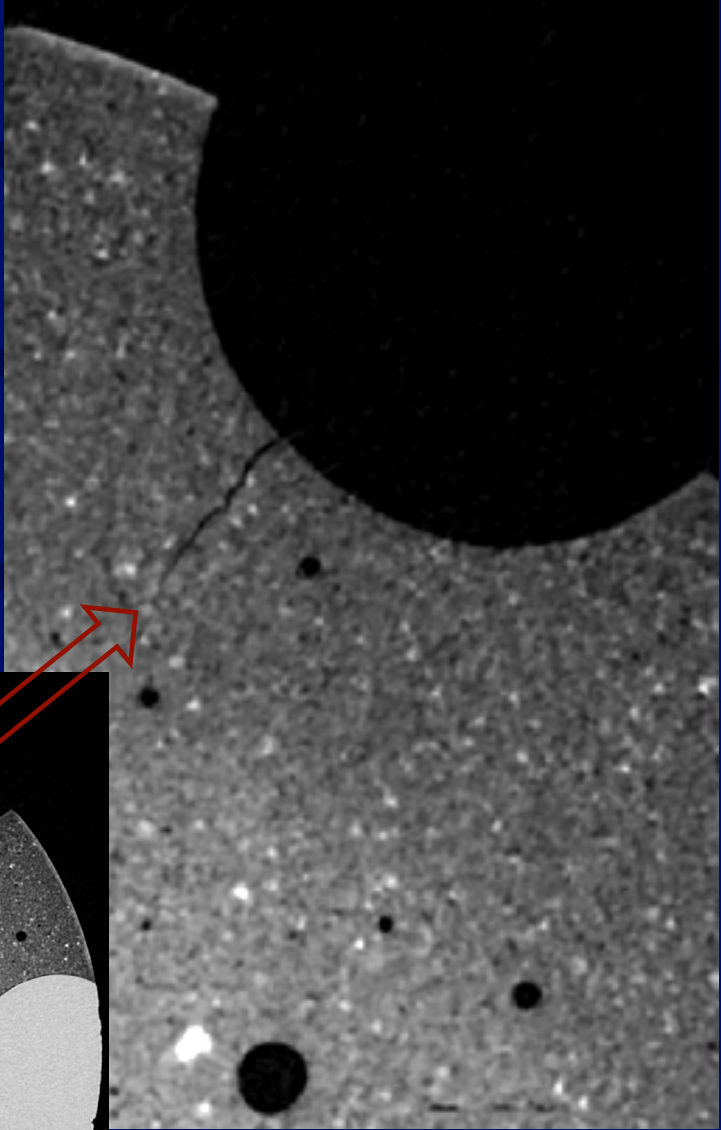
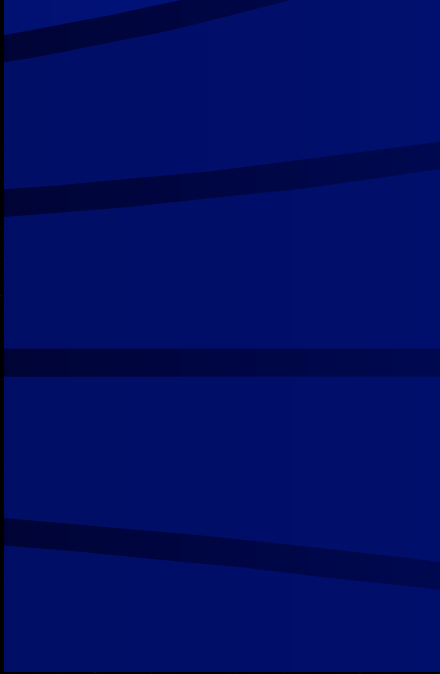
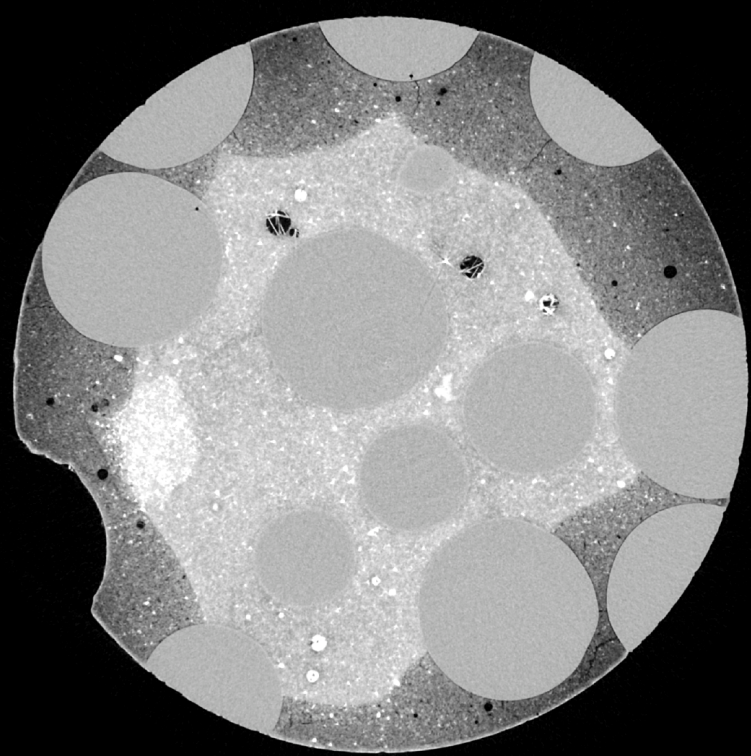
Leaching



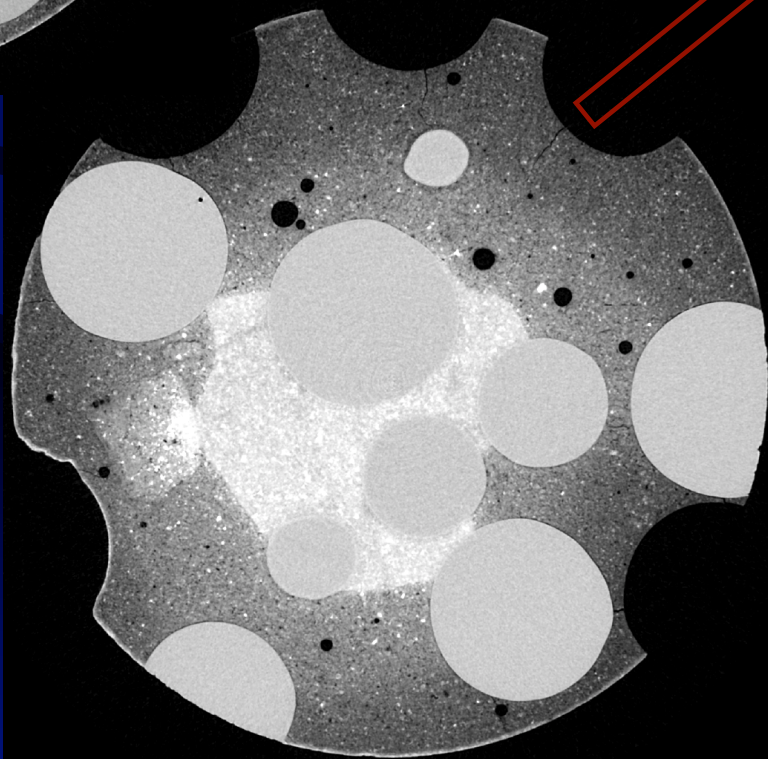


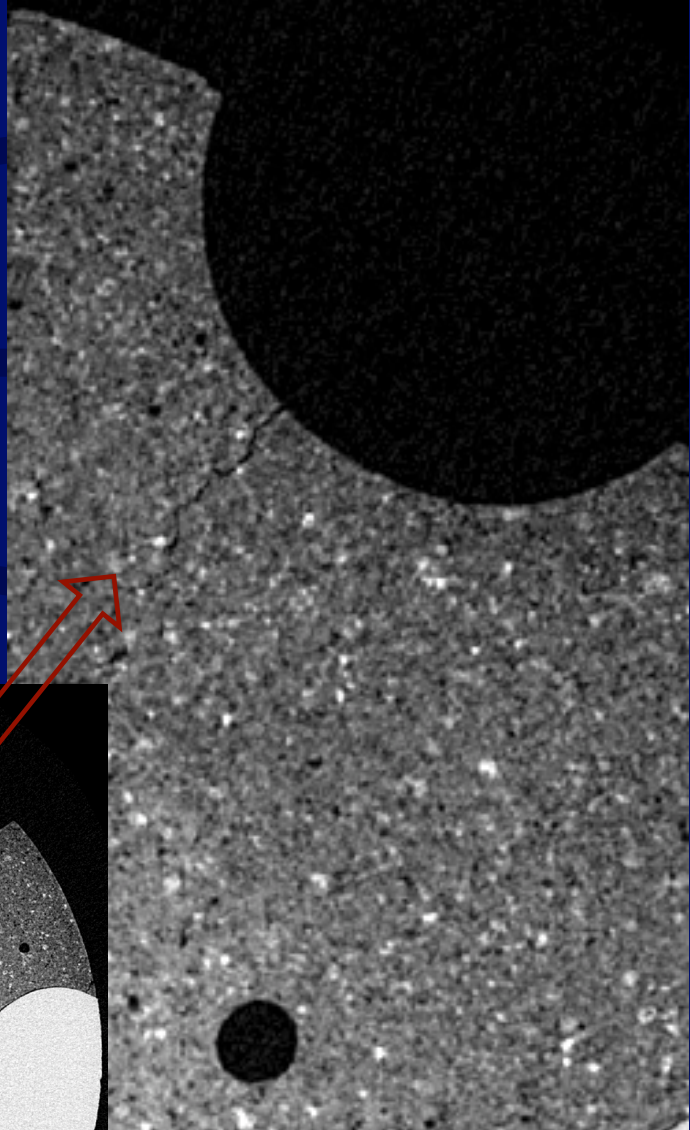
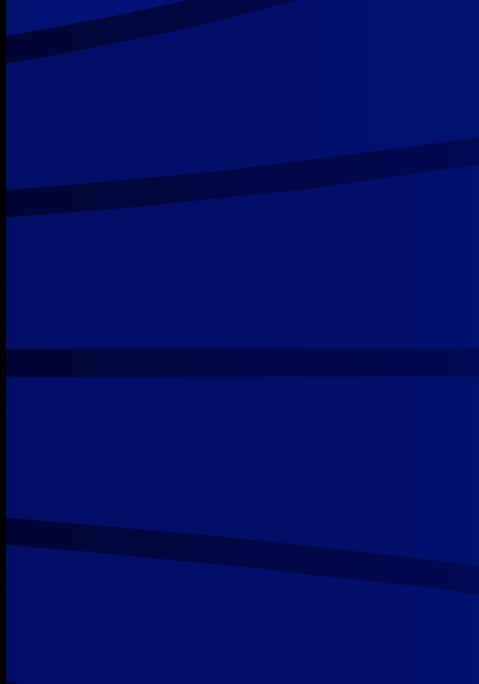
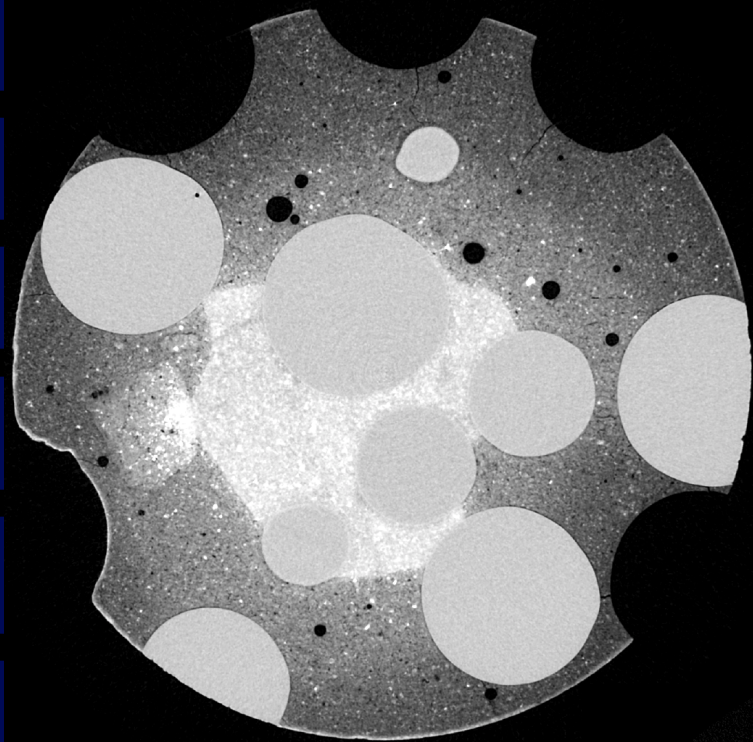
Leaching



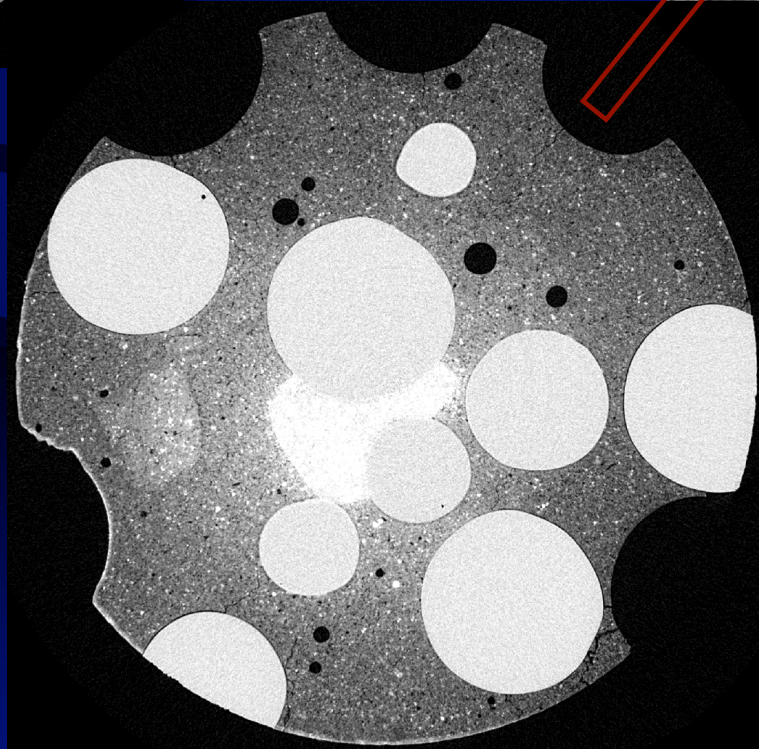


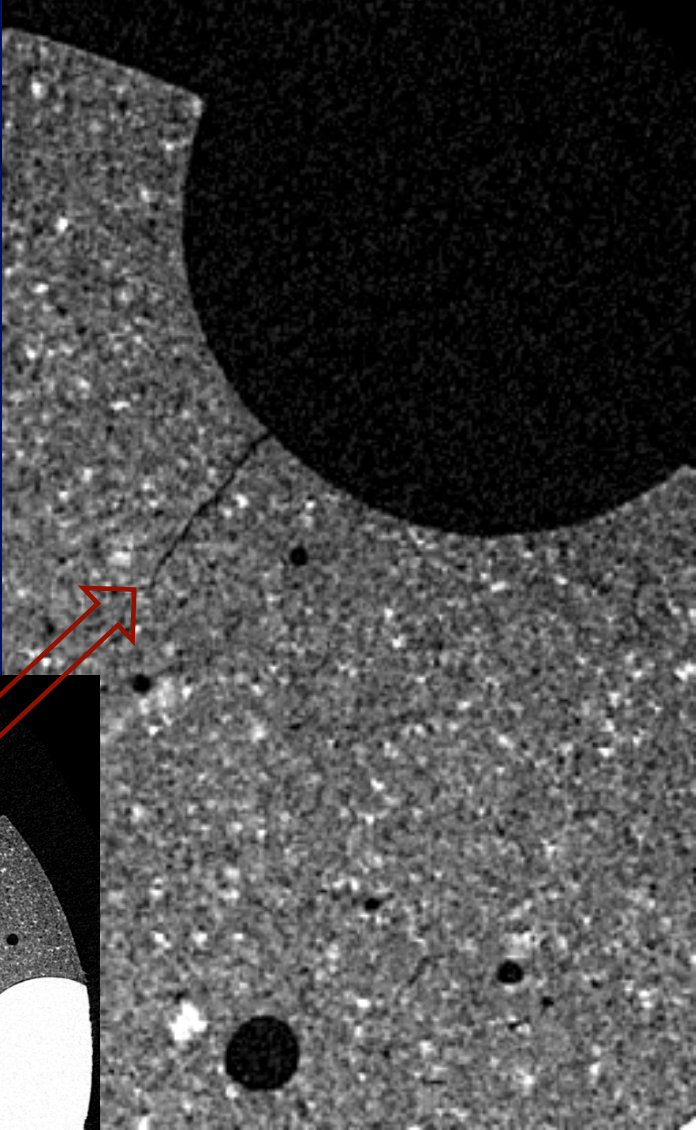
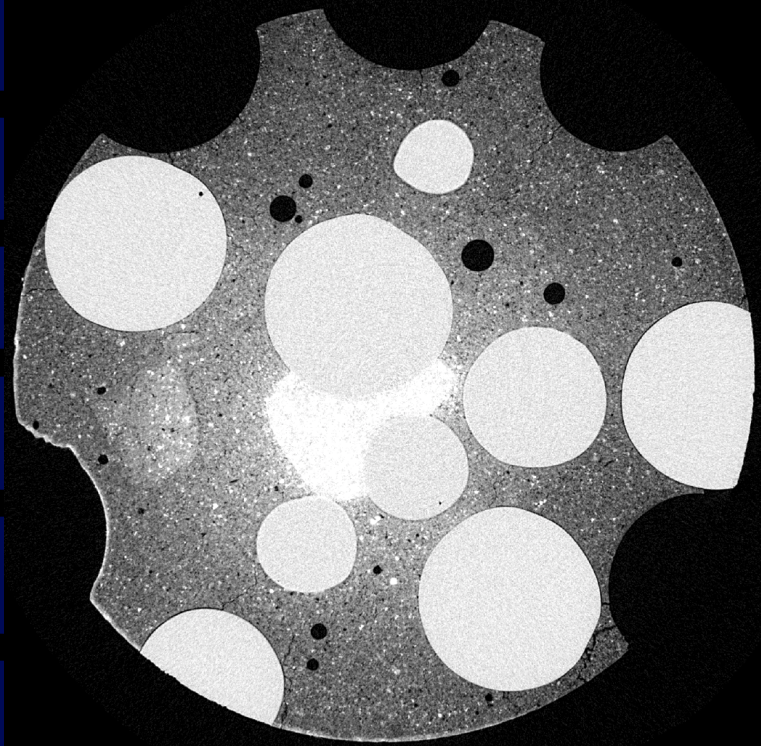
Leaching



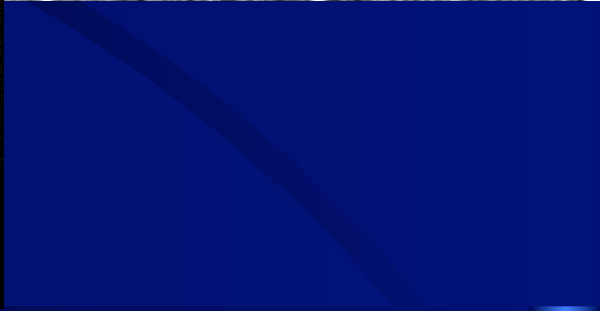
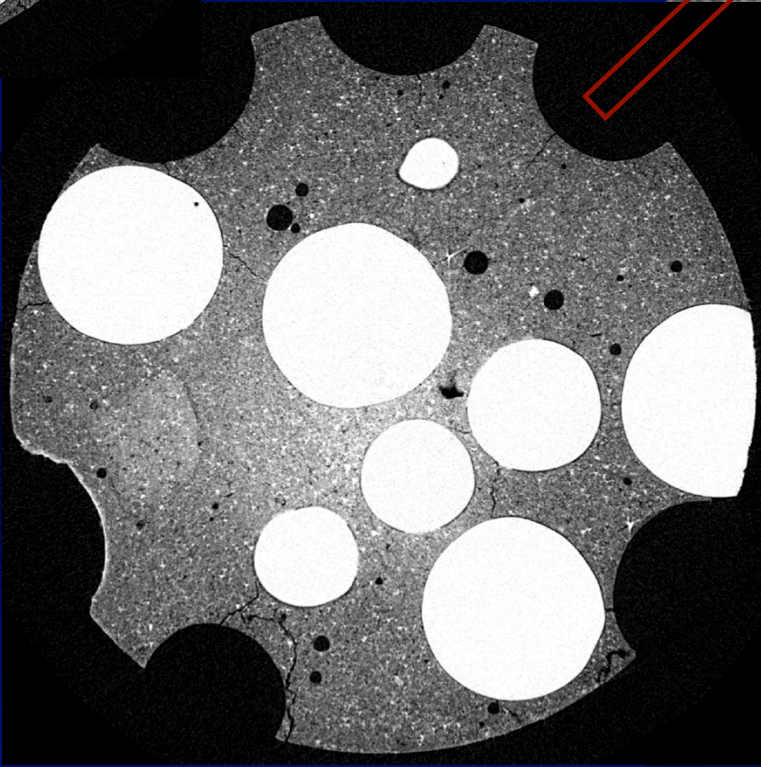


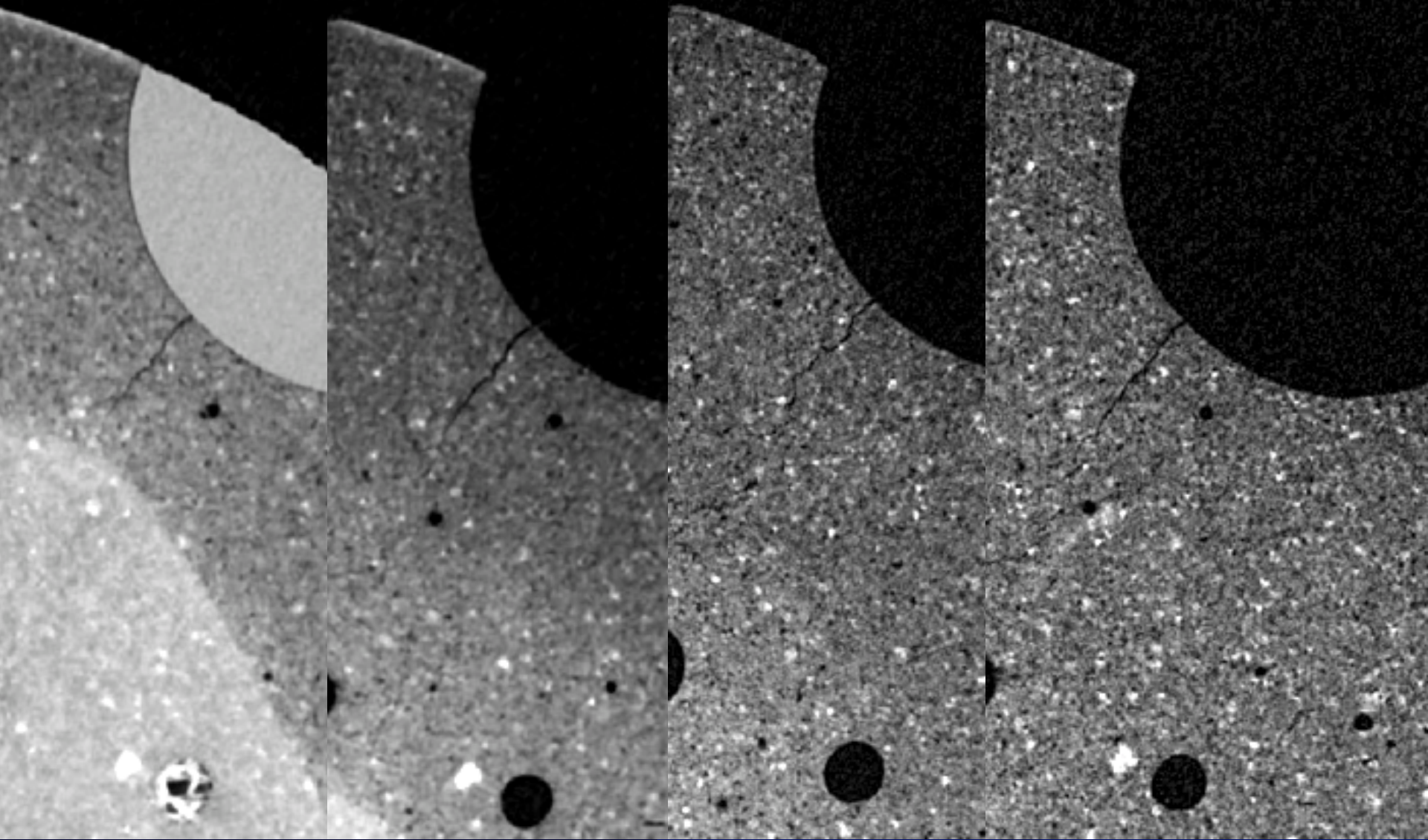
Leaching





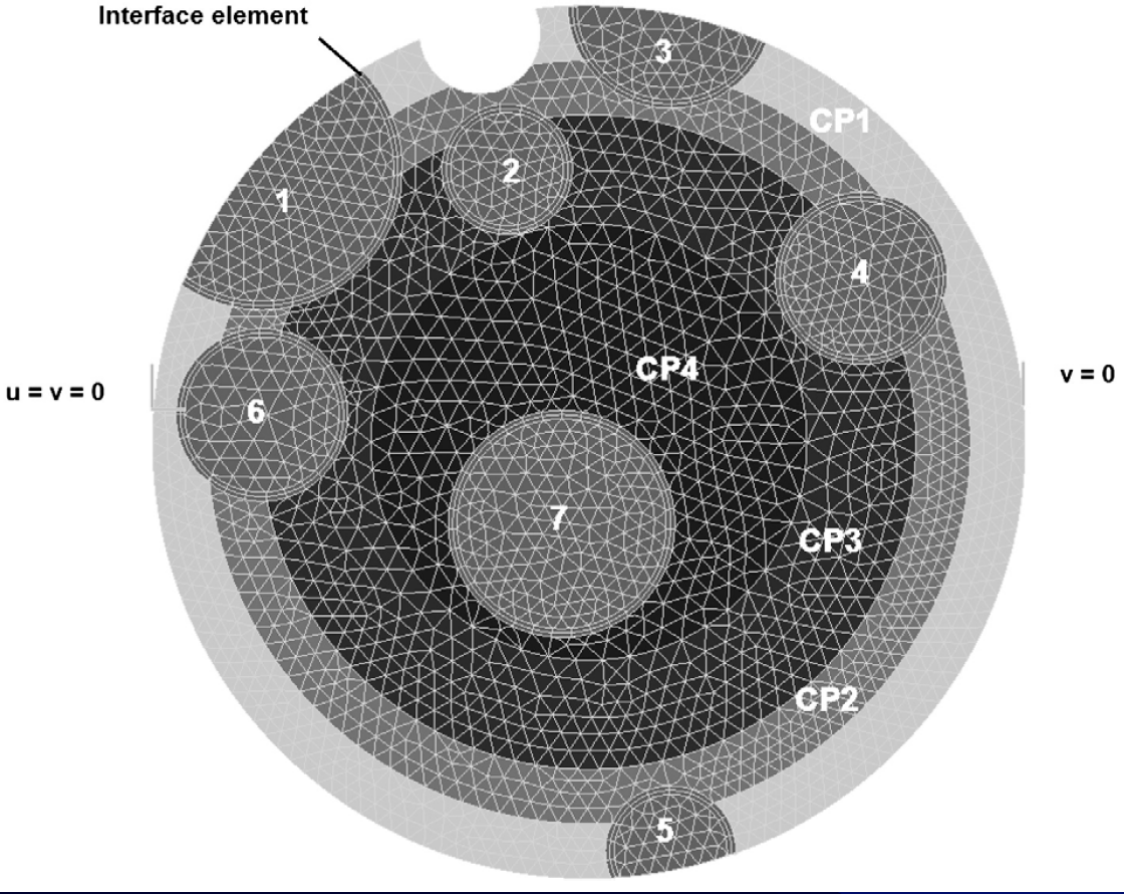
Leaching



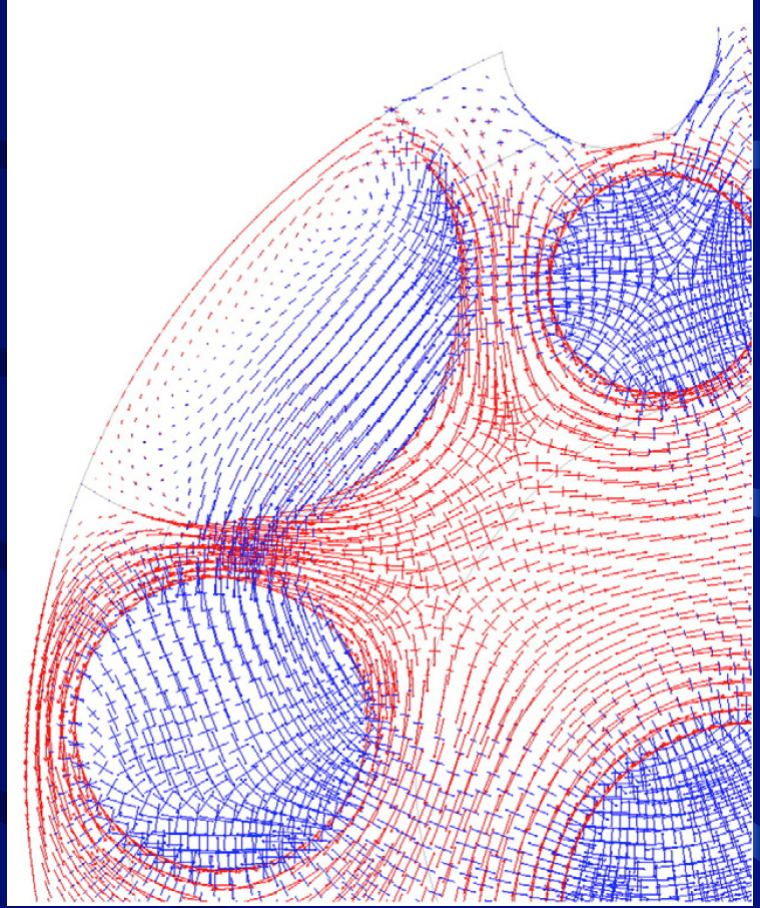


Leaching

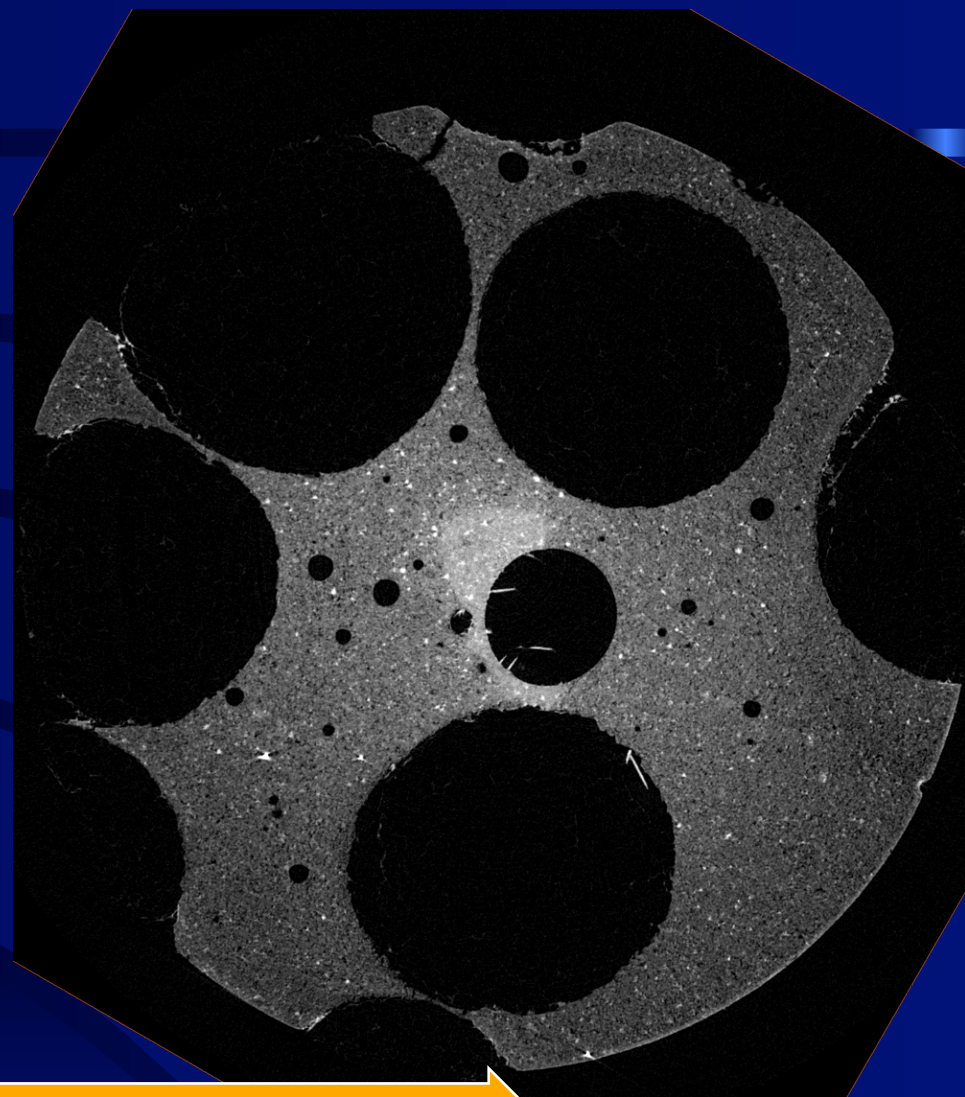
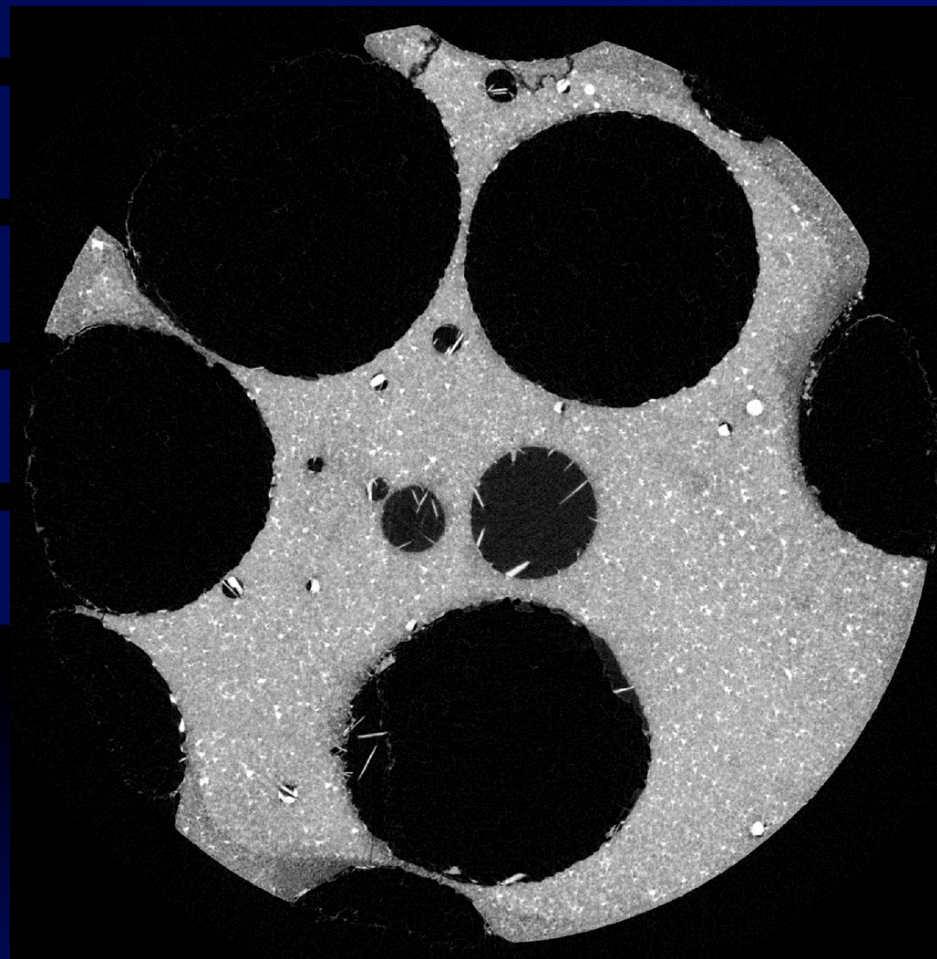
Interface element



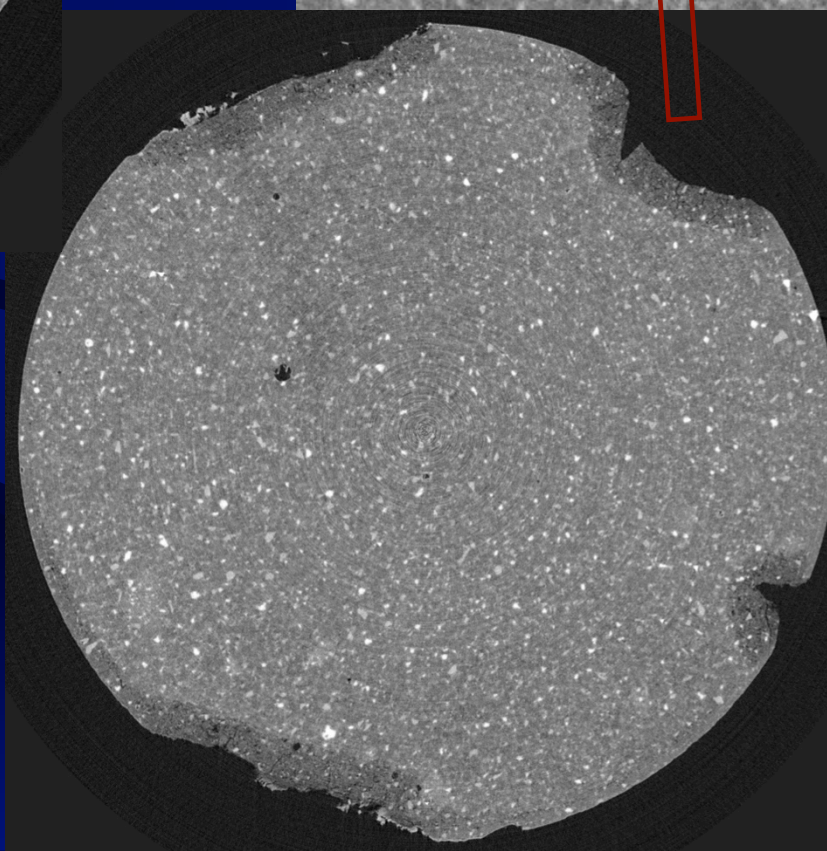
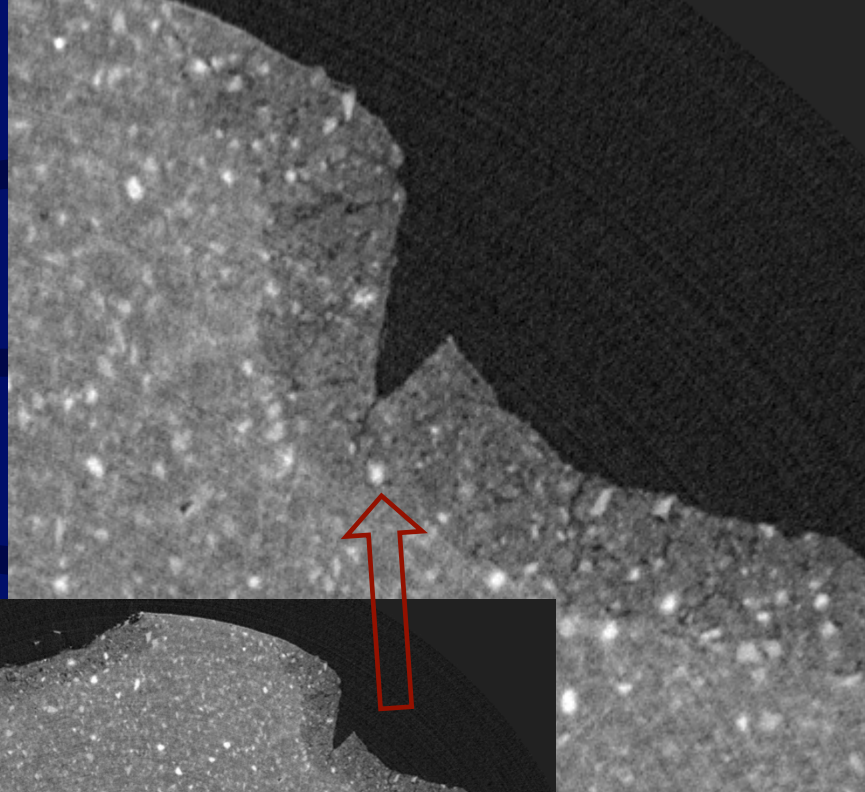
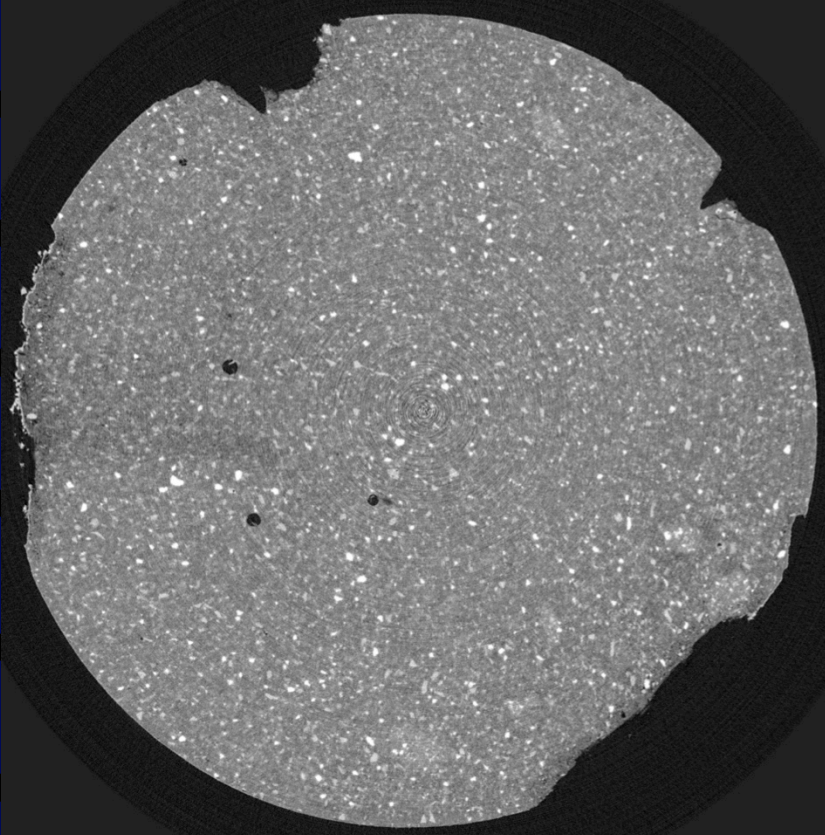
$v=0$



WITH POLYSTYRENE BEADS

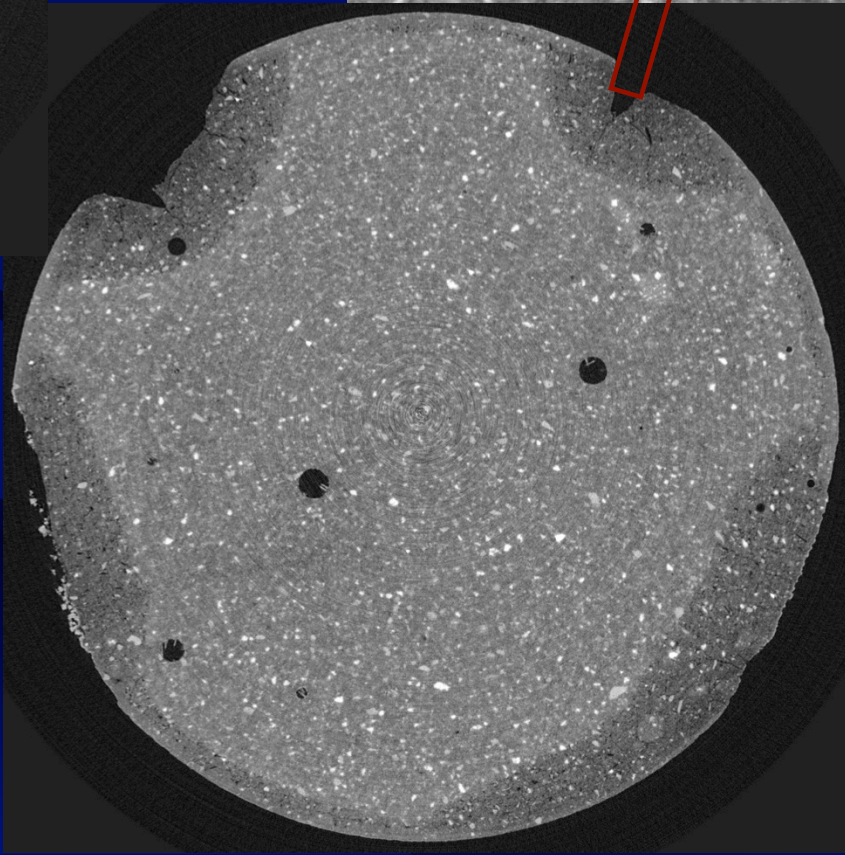
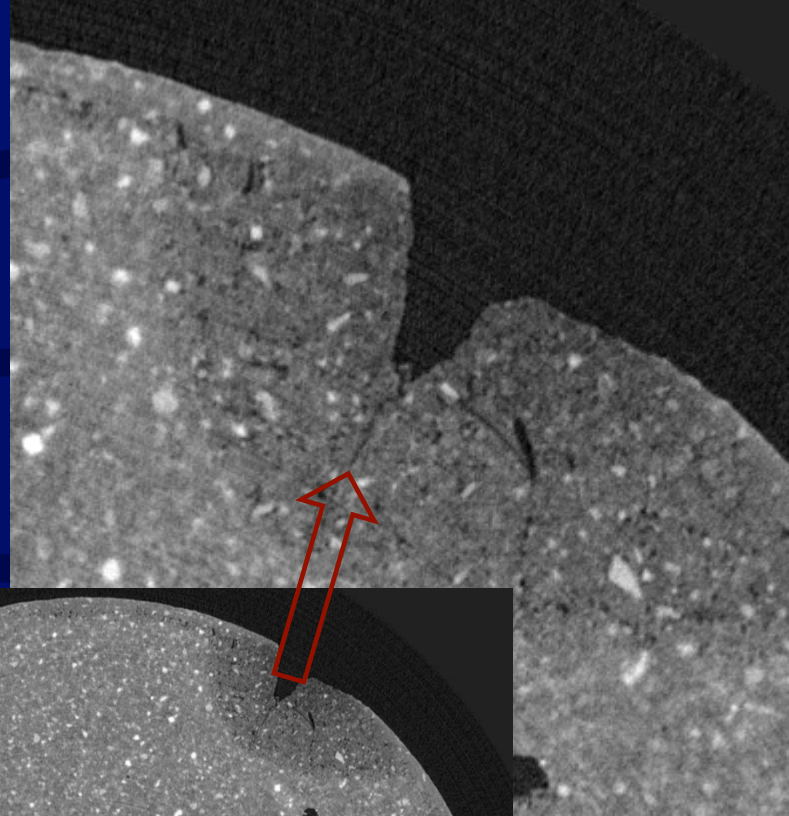
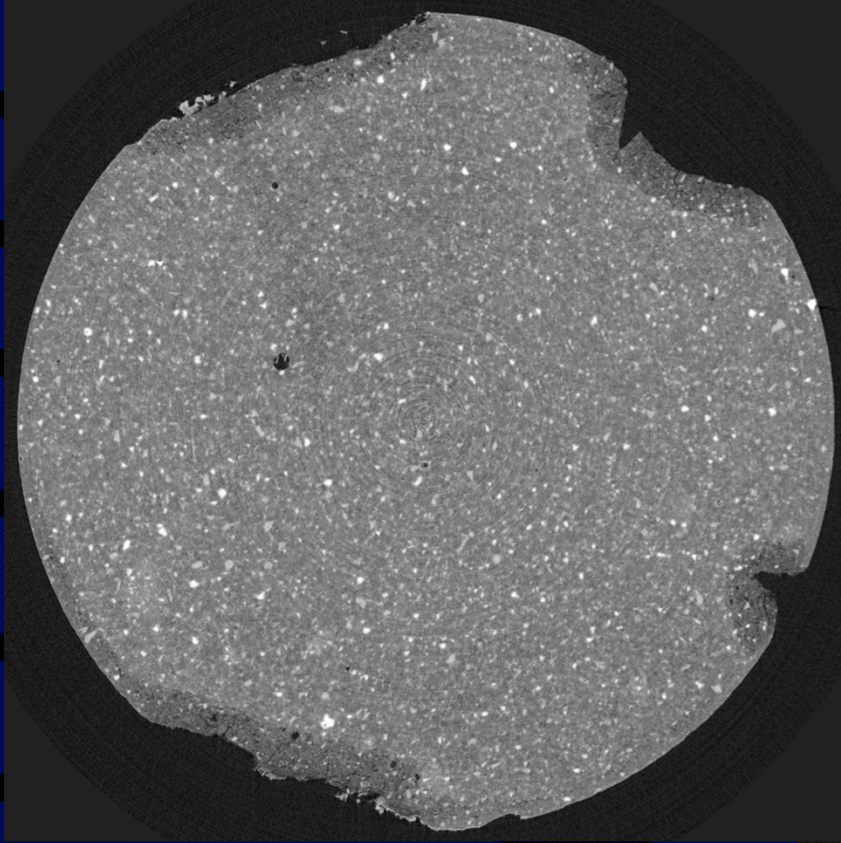


Leaching

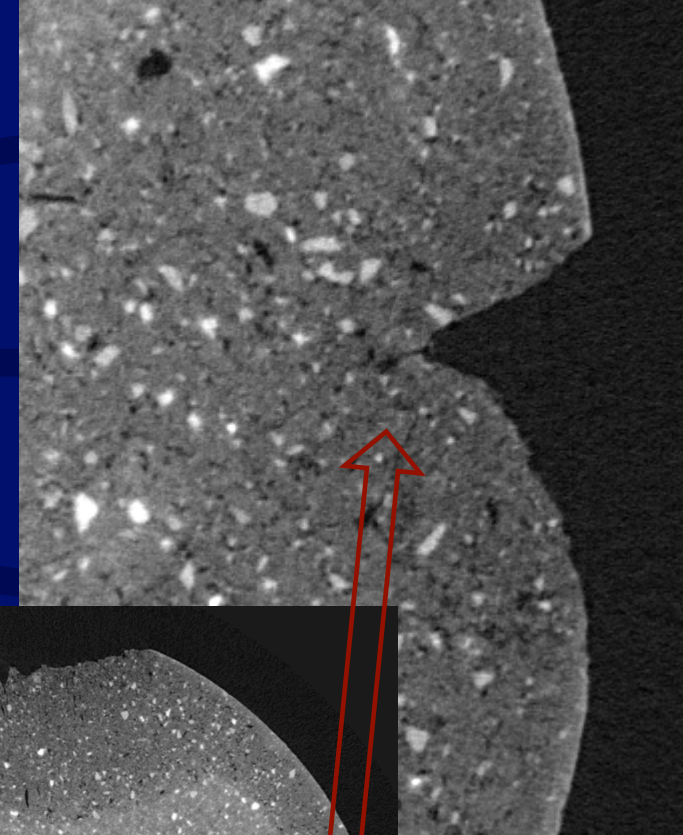
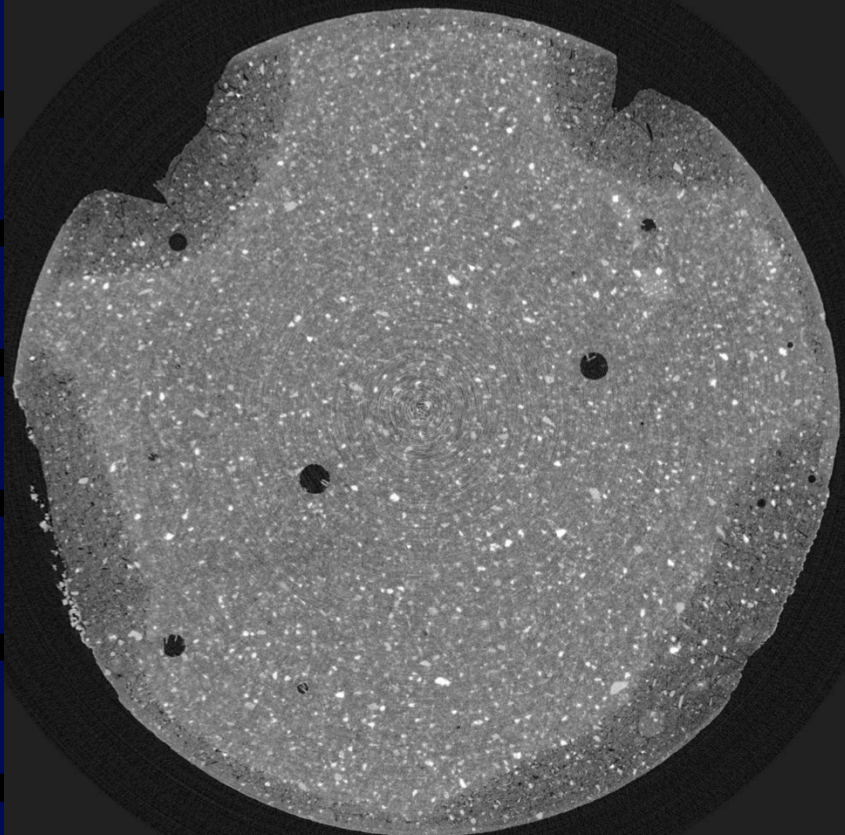


Leaching

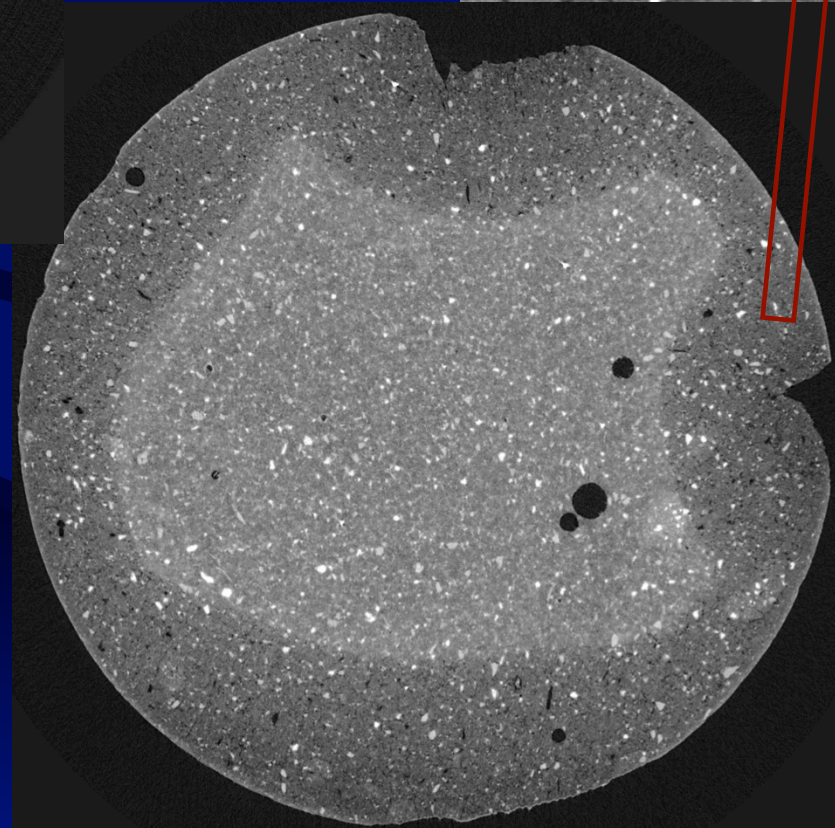


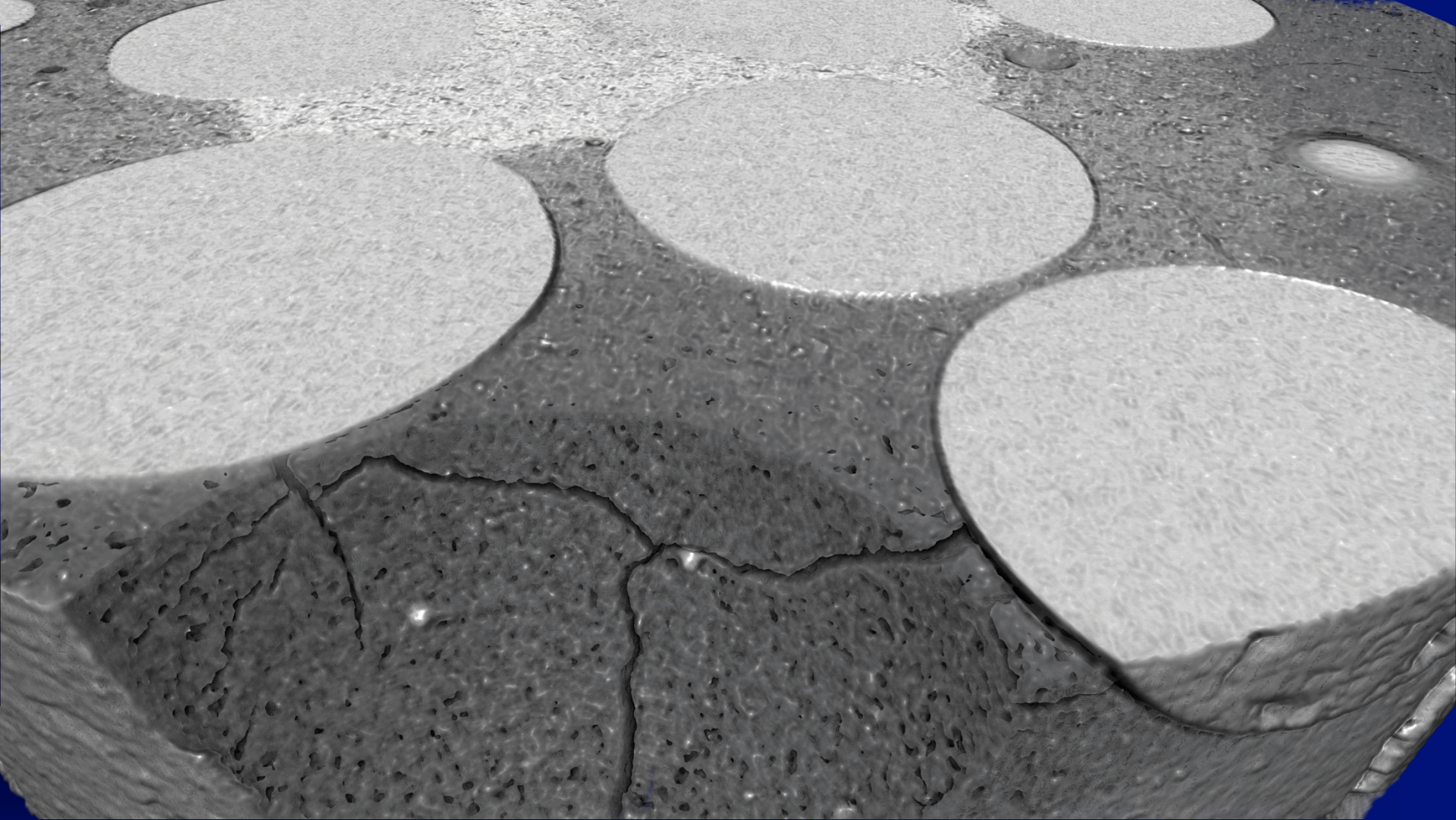


Leaching



Leaching





SUMMARY EXAMPLE 1

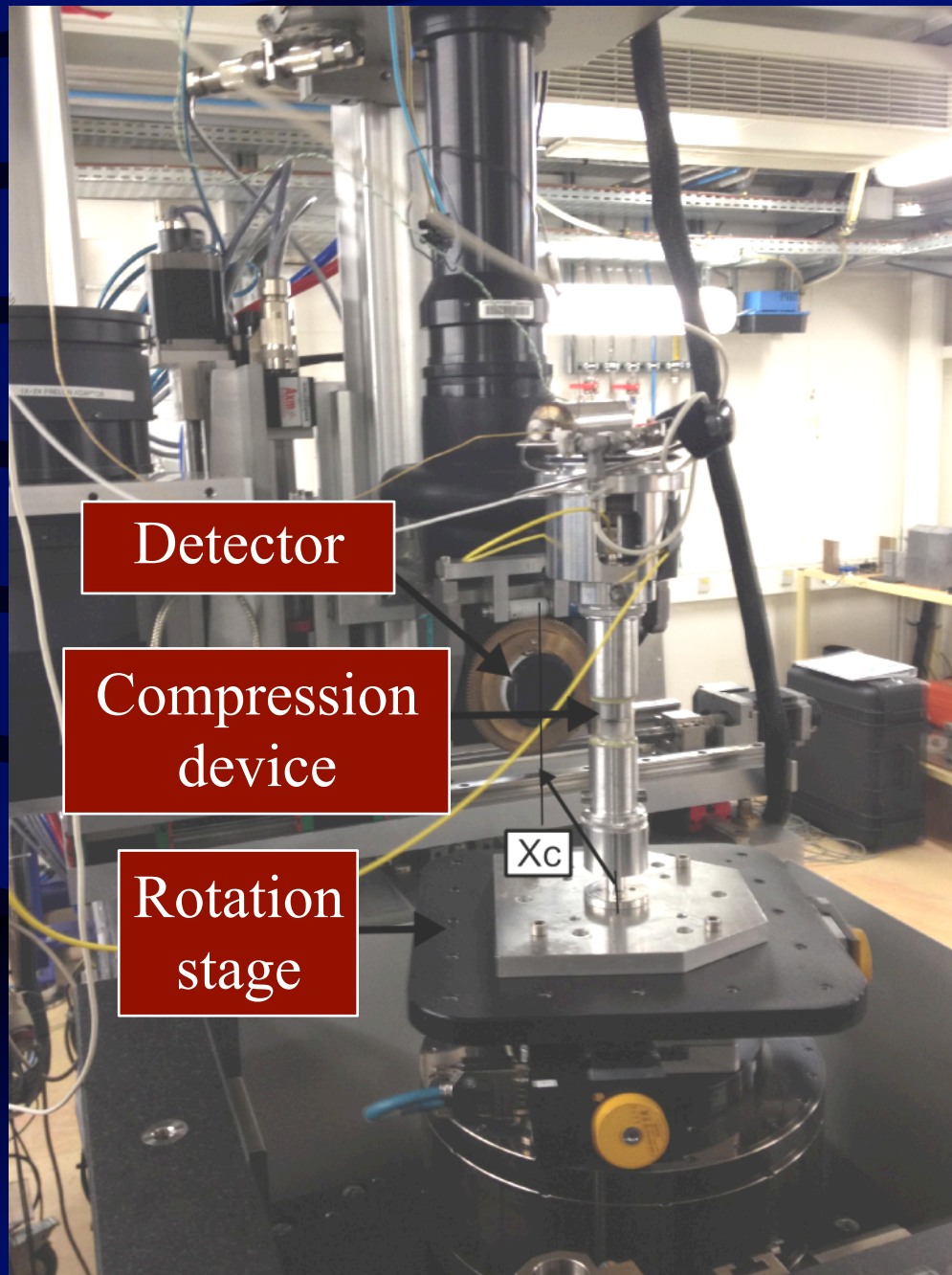
- **Local phenomena**
- **Local characterisation**
- **Local interpretation**
- **Common in porous media physics**

EXAMPLE 2

Microtomographie X de matériaux à comportement pseudo-fragile : identification du réseau de fissures

G. Hauss

PhD thesis, Univ. Bordeaux, 2012



Detector

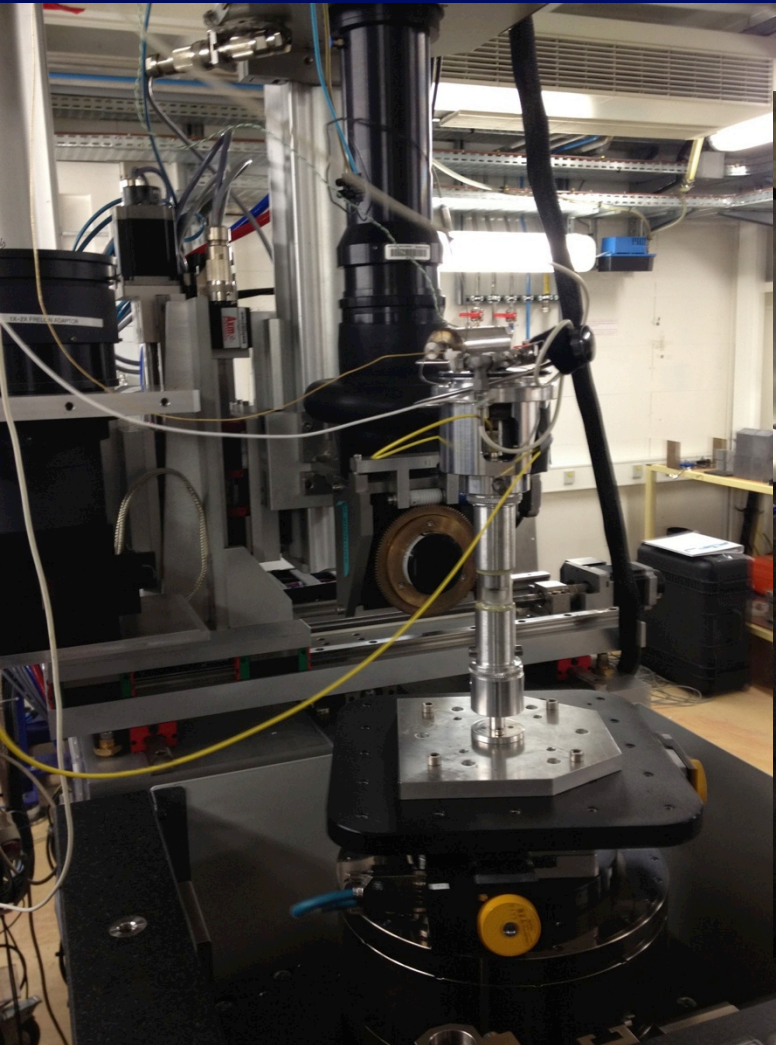
Compression
device

Rotation
stage

Xc

ESRF – ID 19

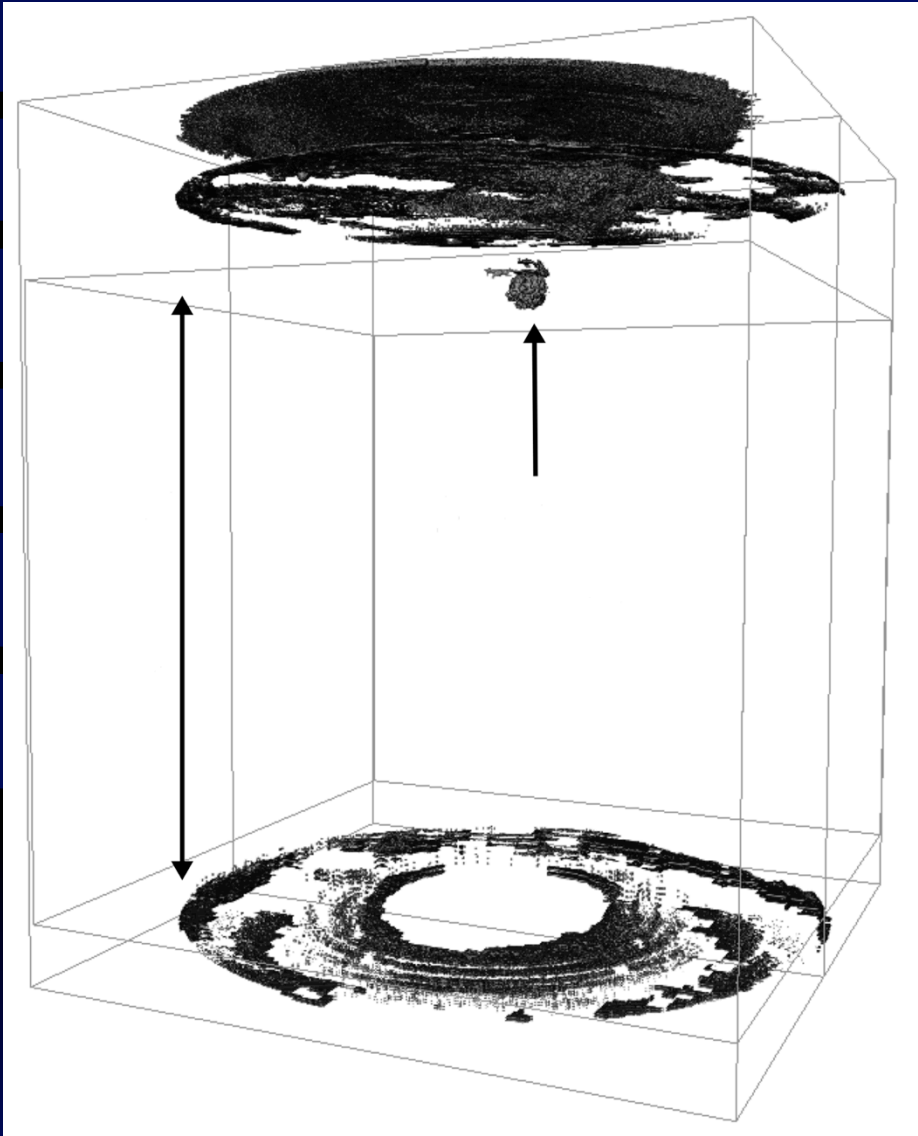
$X_c = 100 \text{ mm}$



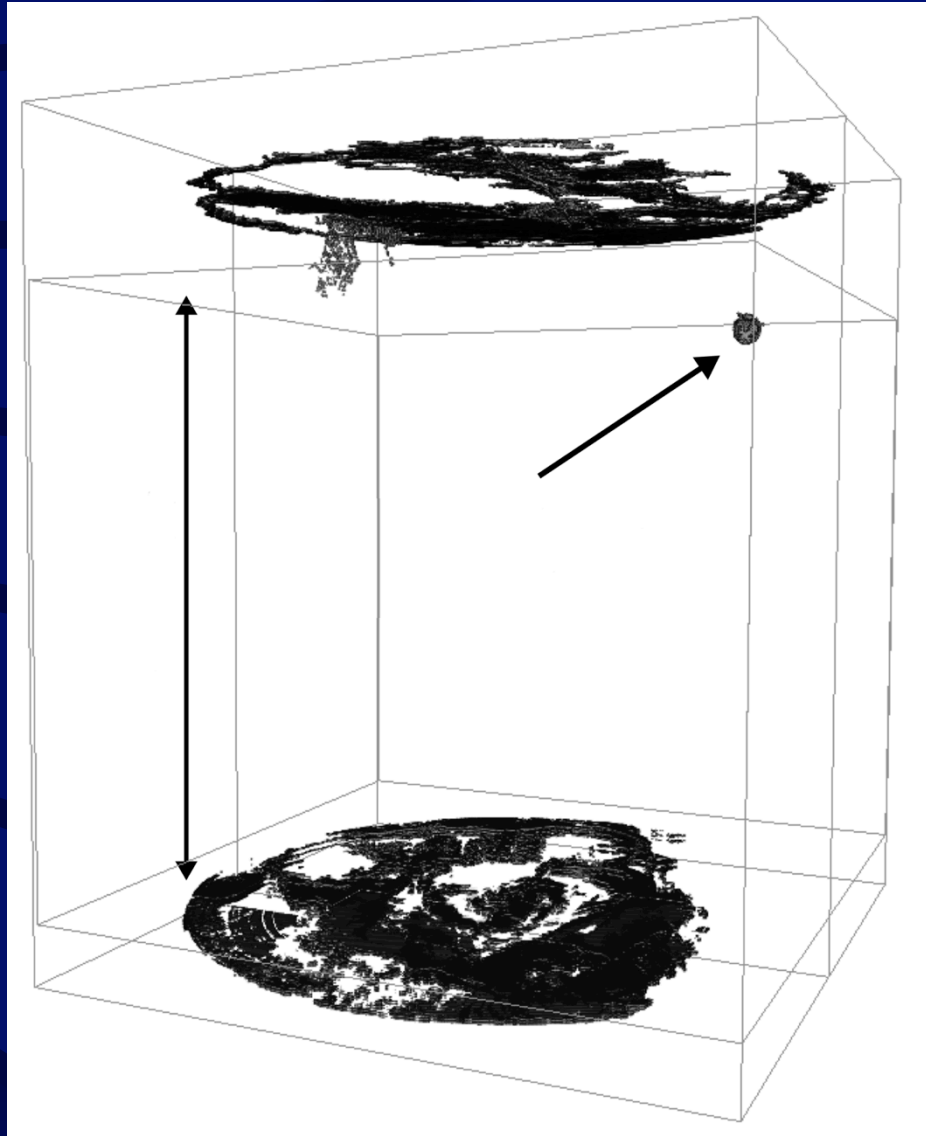
$X_c = 900 \text{ mm}$



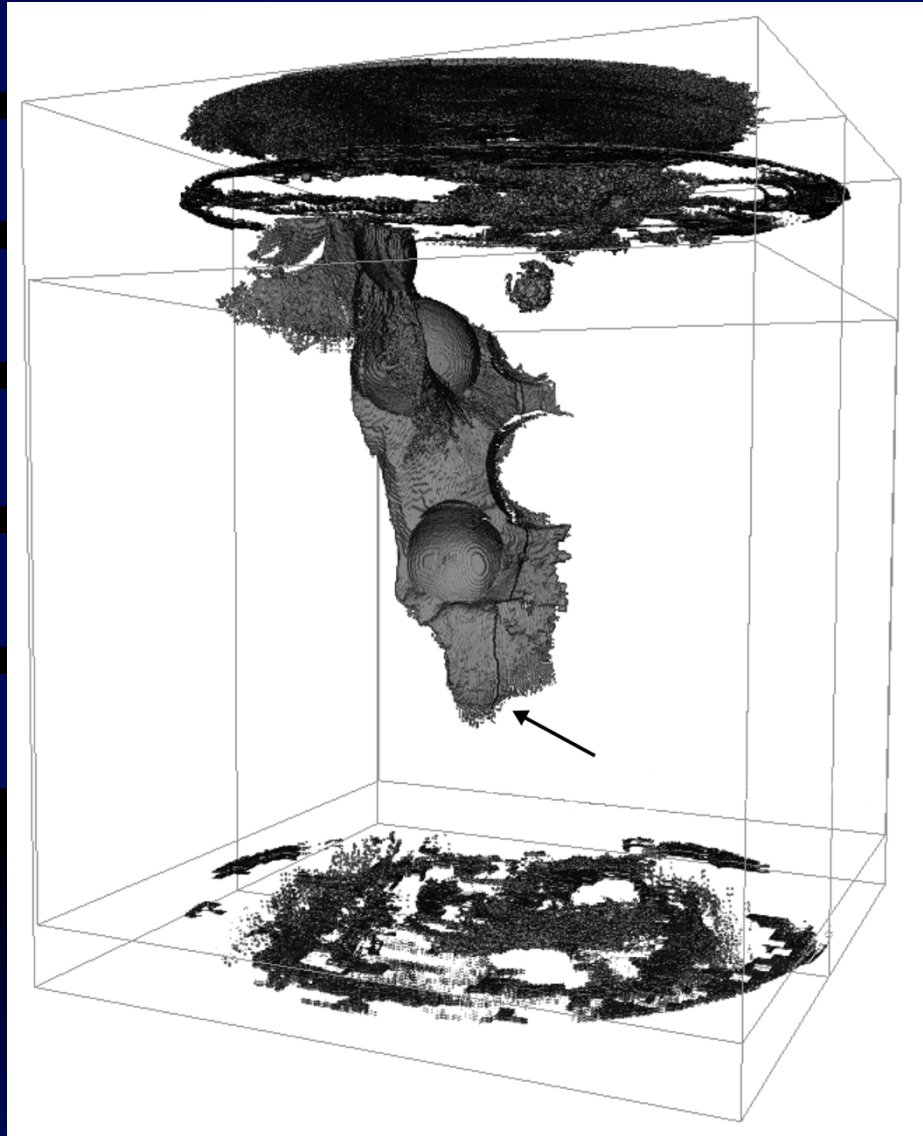
$X_c = 100 \text{ mm}$



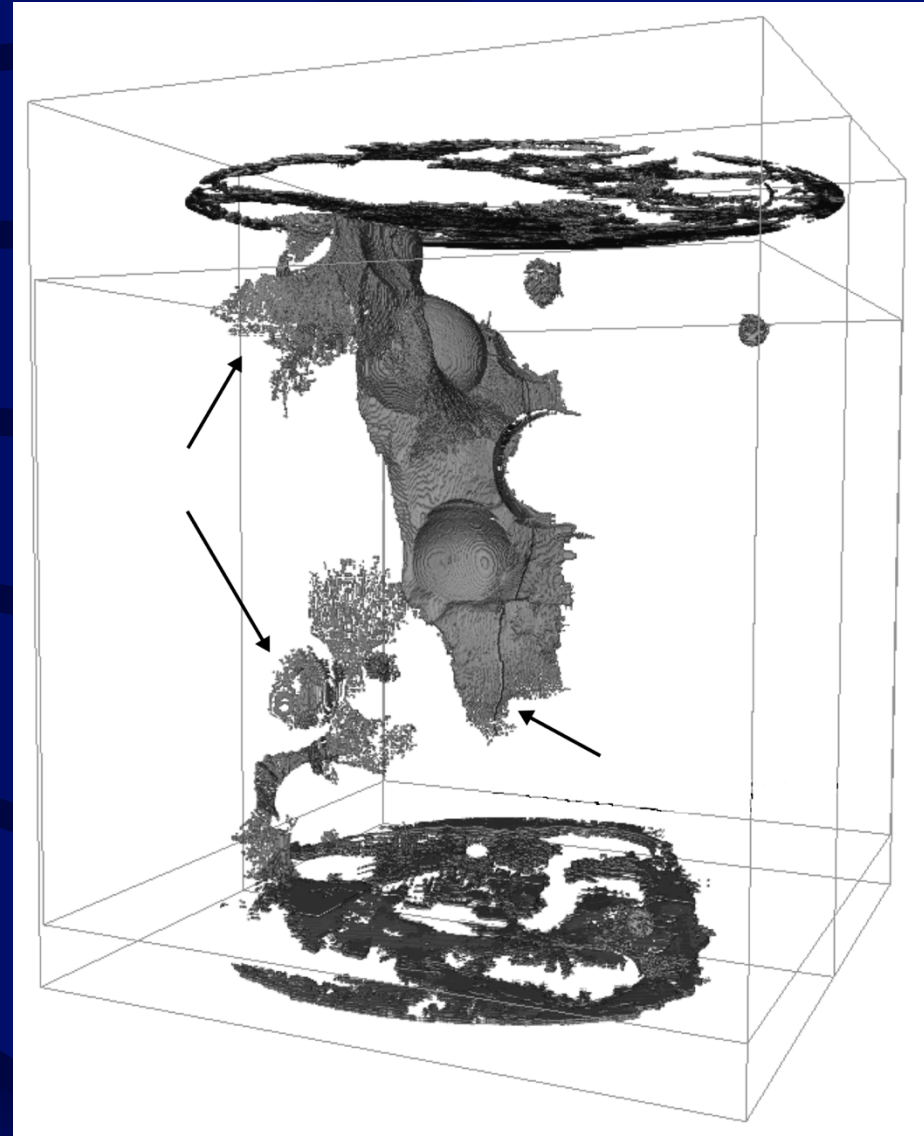
$X_c = 900 \text{ mm}$



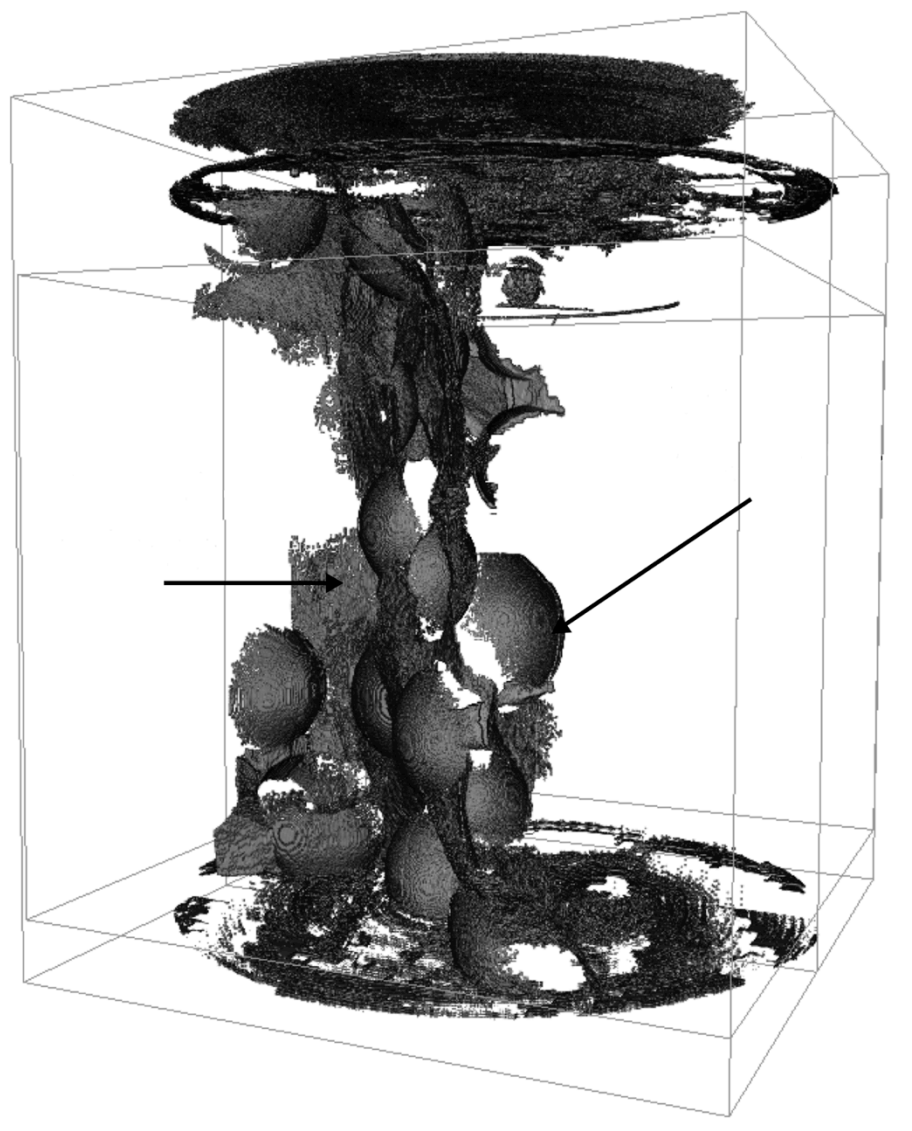
$X_c = 100 \text{ mm}$



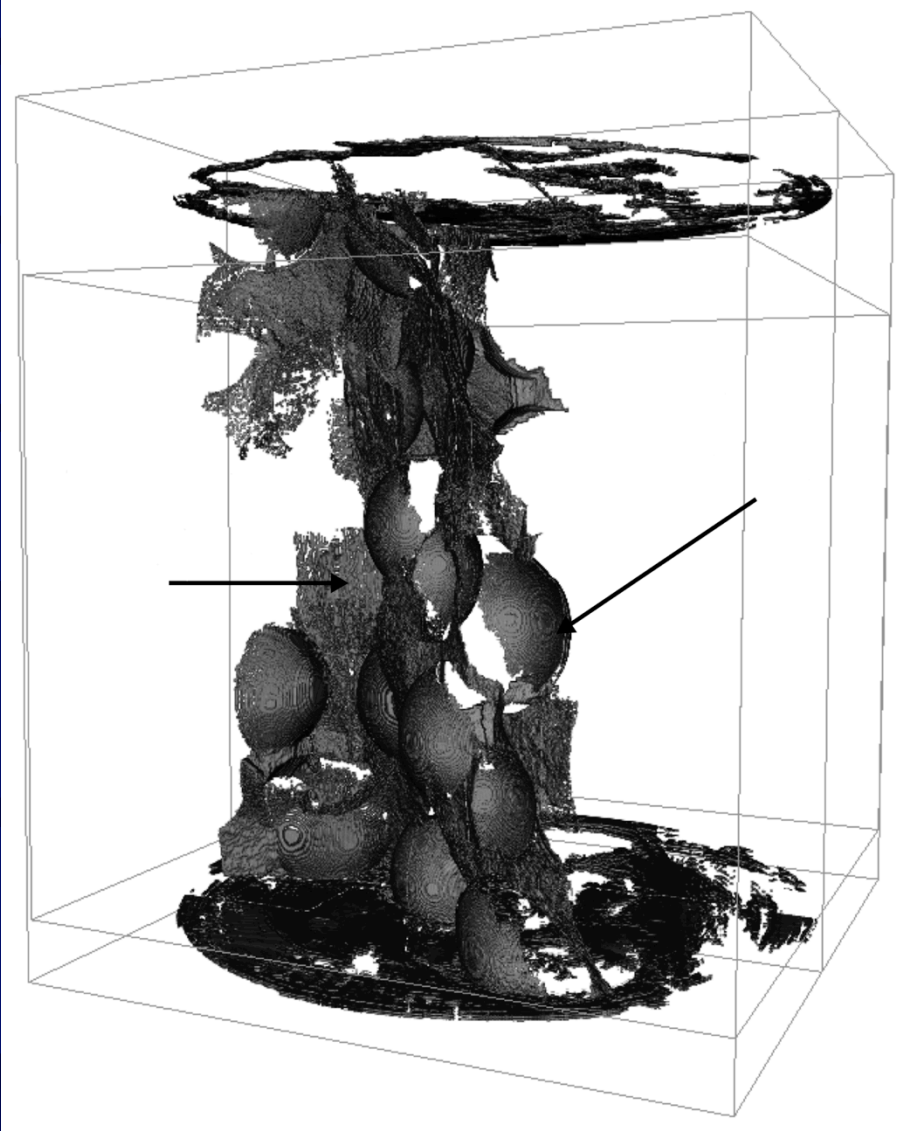
$X_c = 900 \text{ mm}$



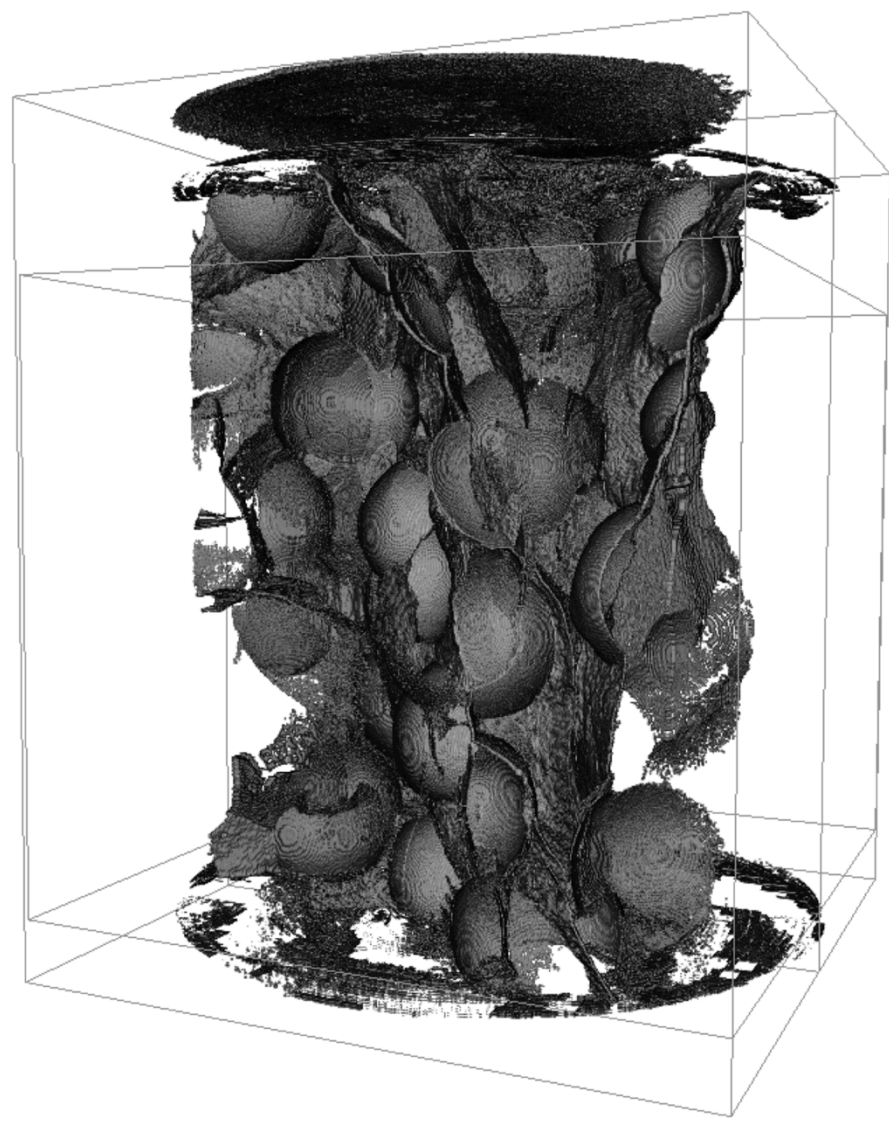
$X_c = 100 \text{ mm}$



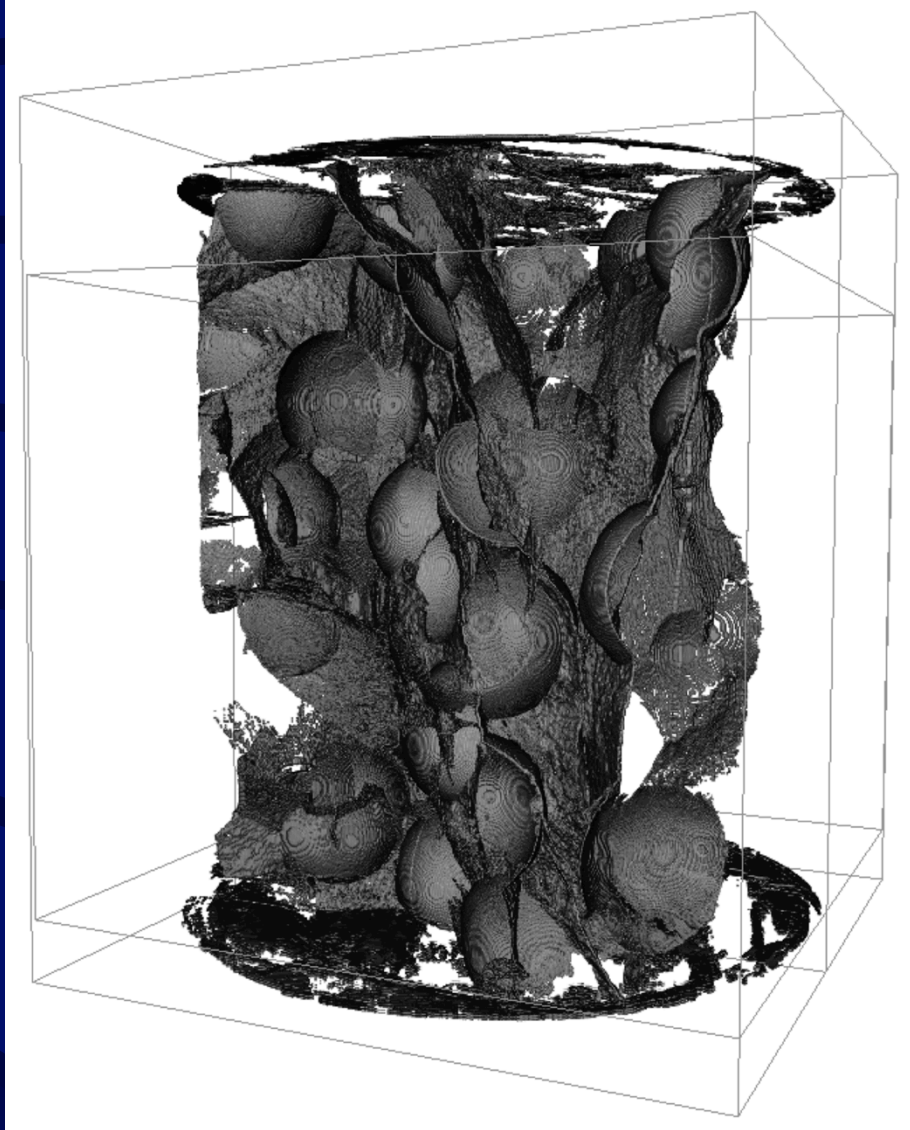
$X_c = 900 \text{ mm}$



$X_c = 100 \text{ mm}$



$X_c = 900 \text{ mm}$



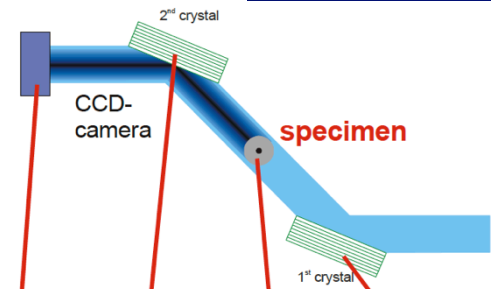
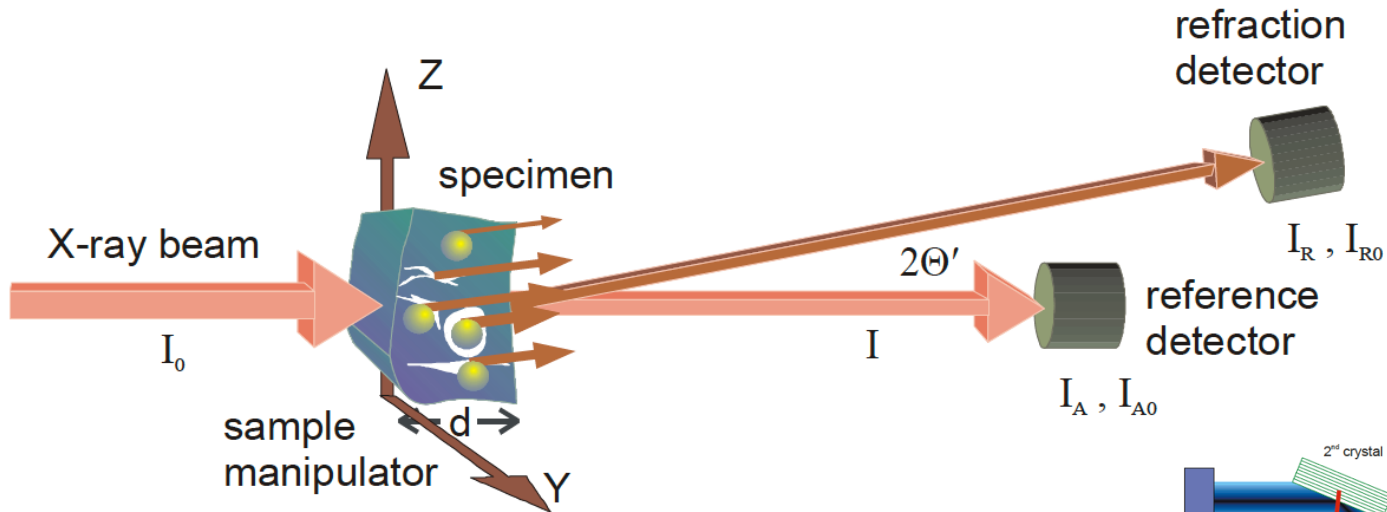
SUMMARY EXAMPLE 2

- **Local phenomena**
- **Local characterisations**
- **Global interpretation**

DISCUSSION



OTHER METHODS



BAM line at BESSY II

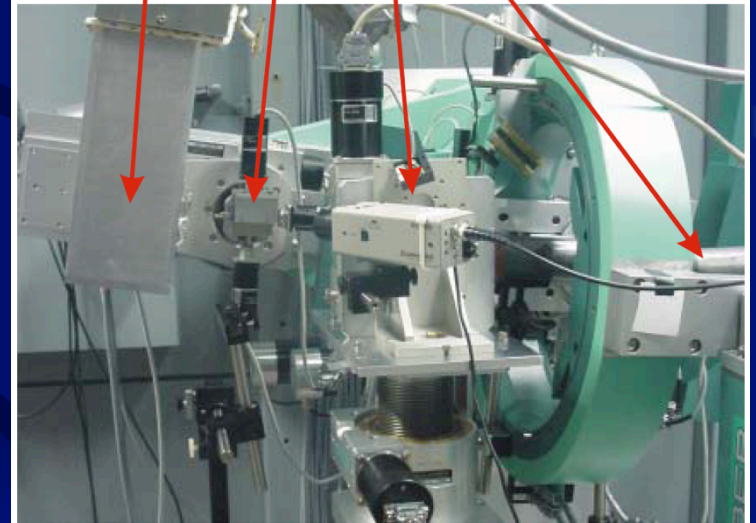
(Berlin)

B. R. MÜLLER

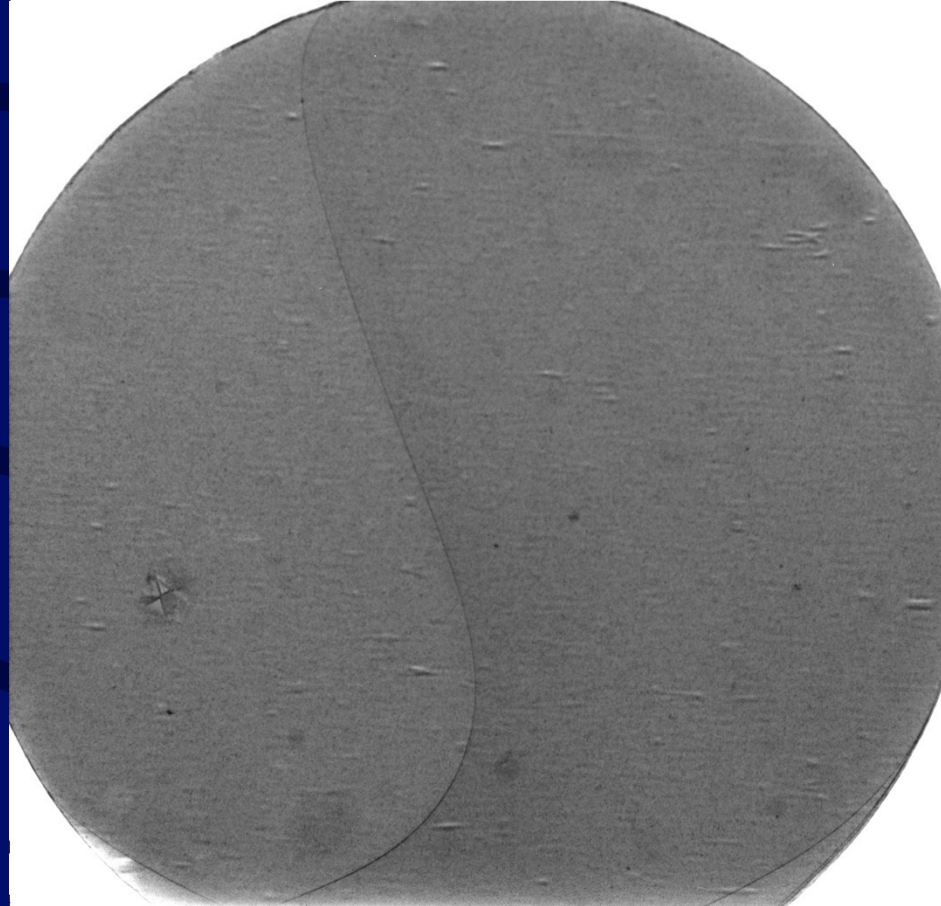
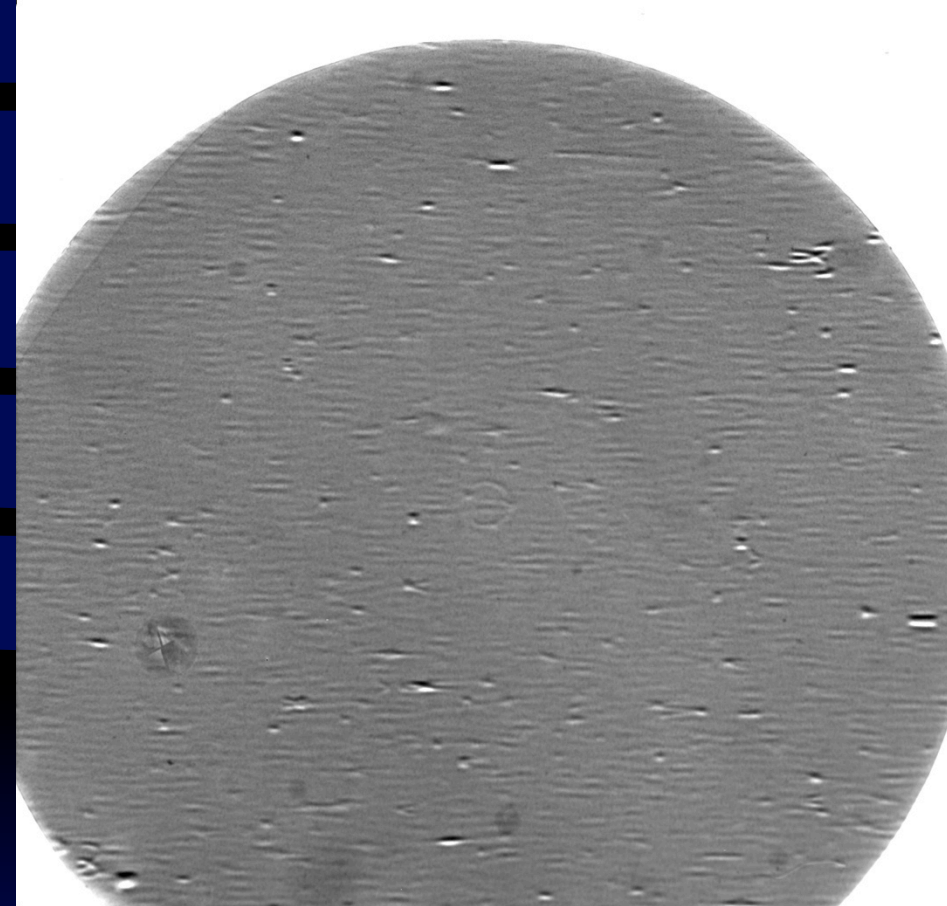
A. KUPSCH

R. LAQUAI

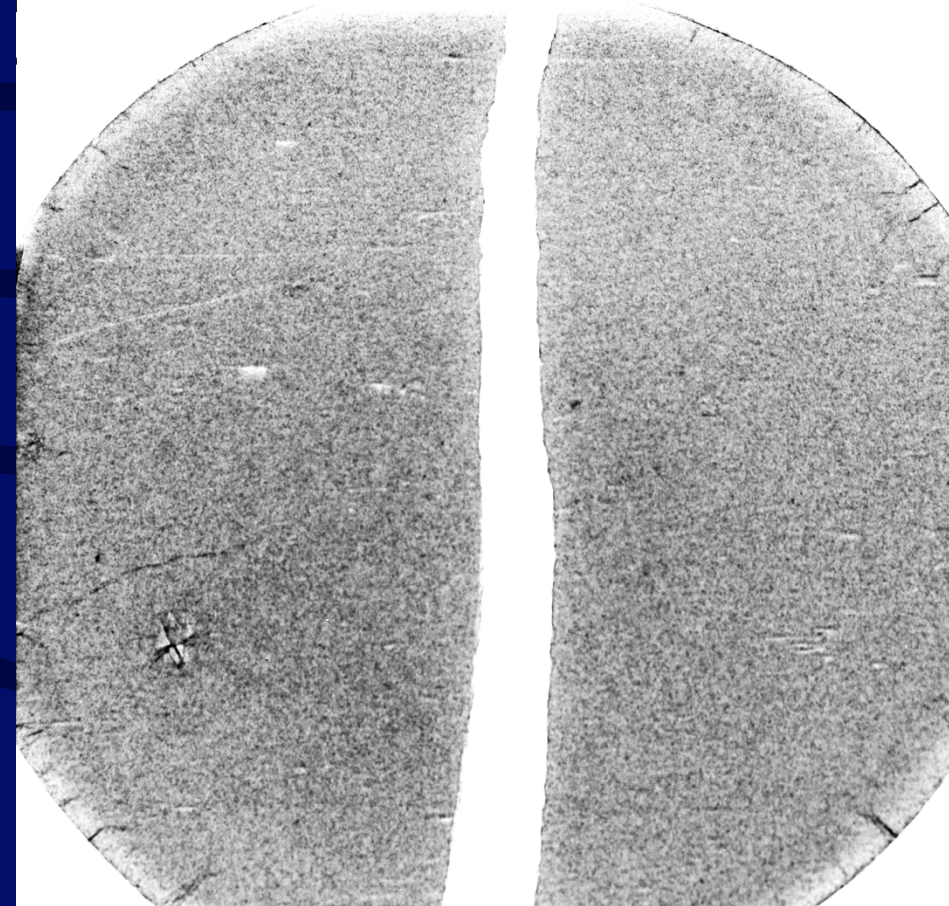
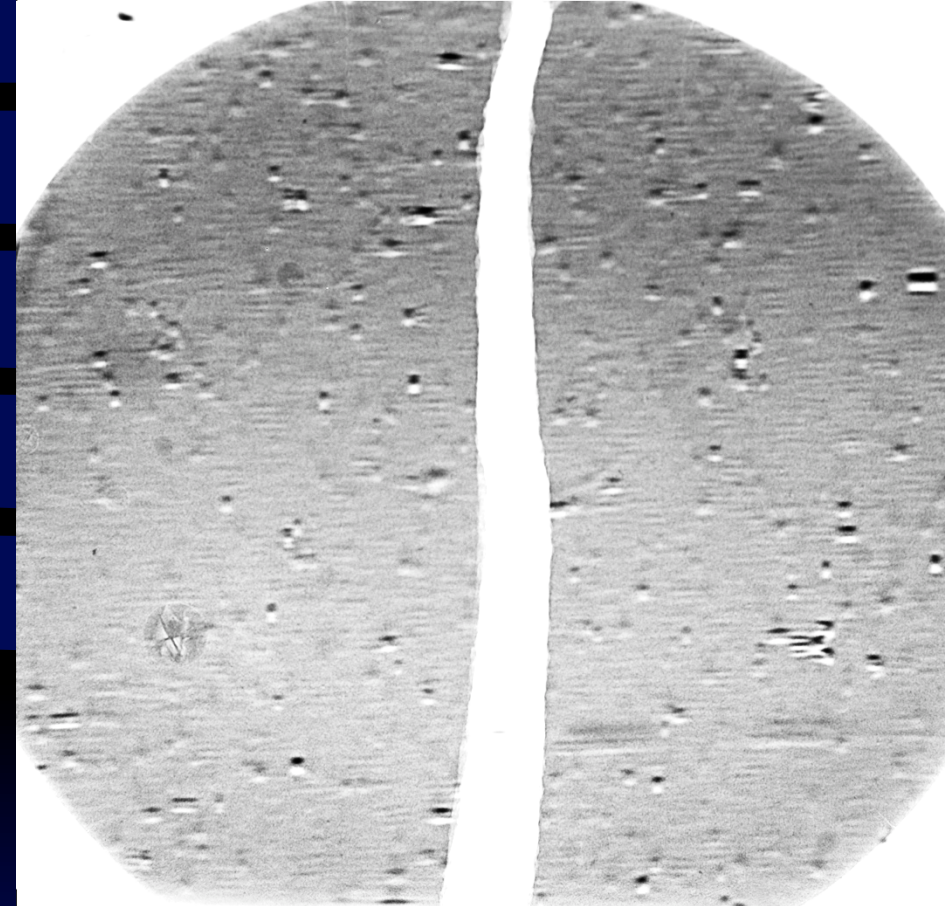
G. BRUNO



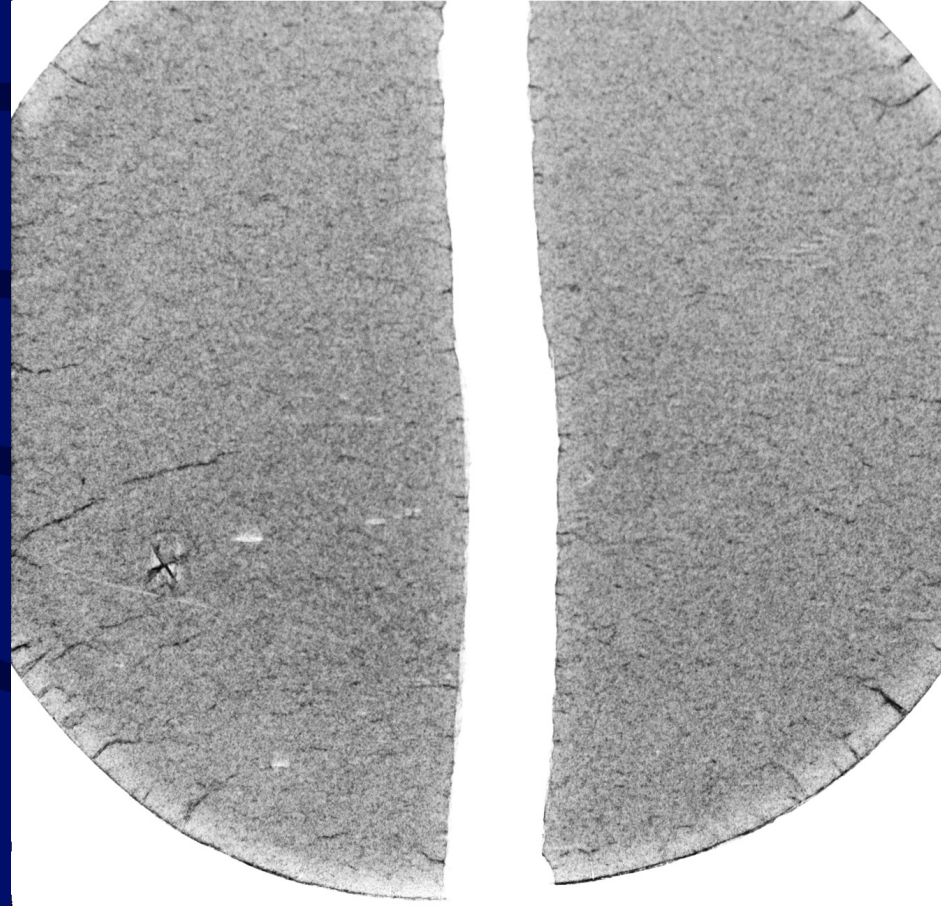
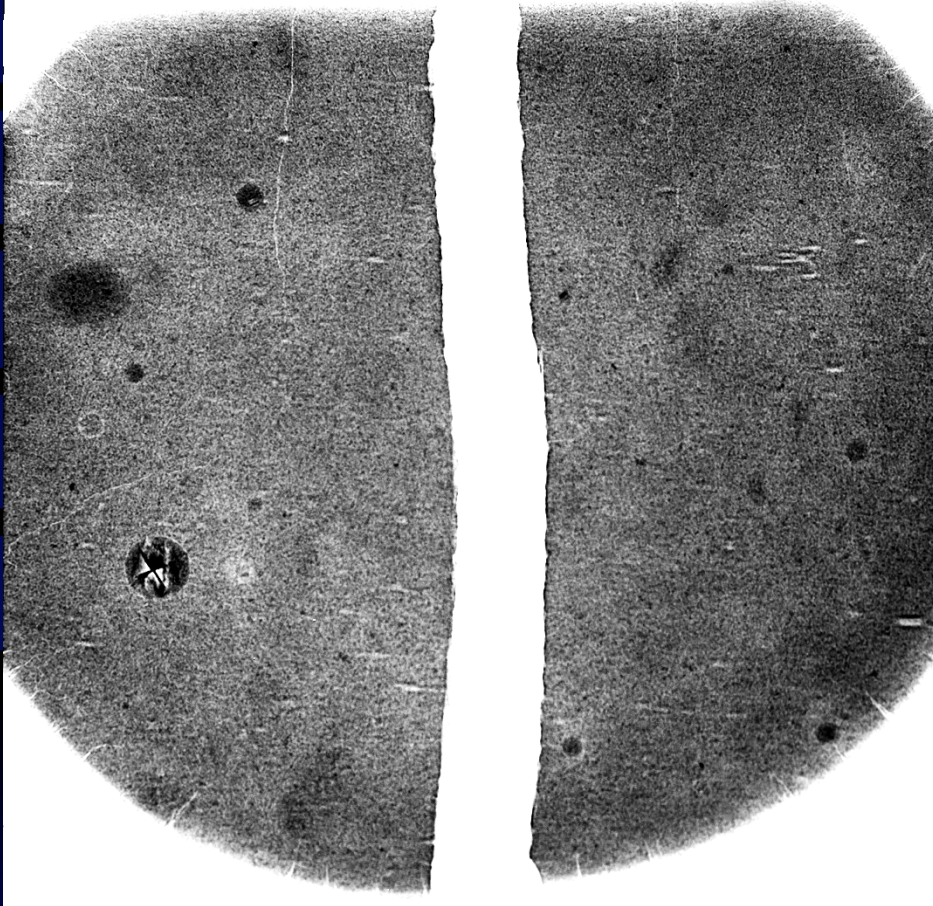
REFRACTION



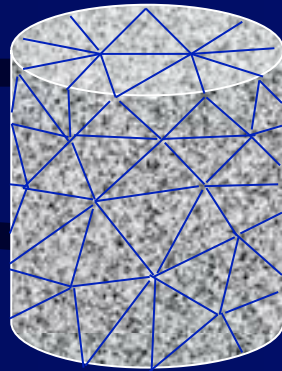
REFRACTION



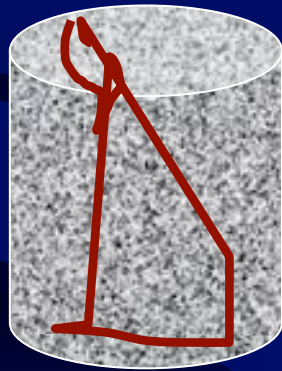
REFRACTION



DISCUSSION

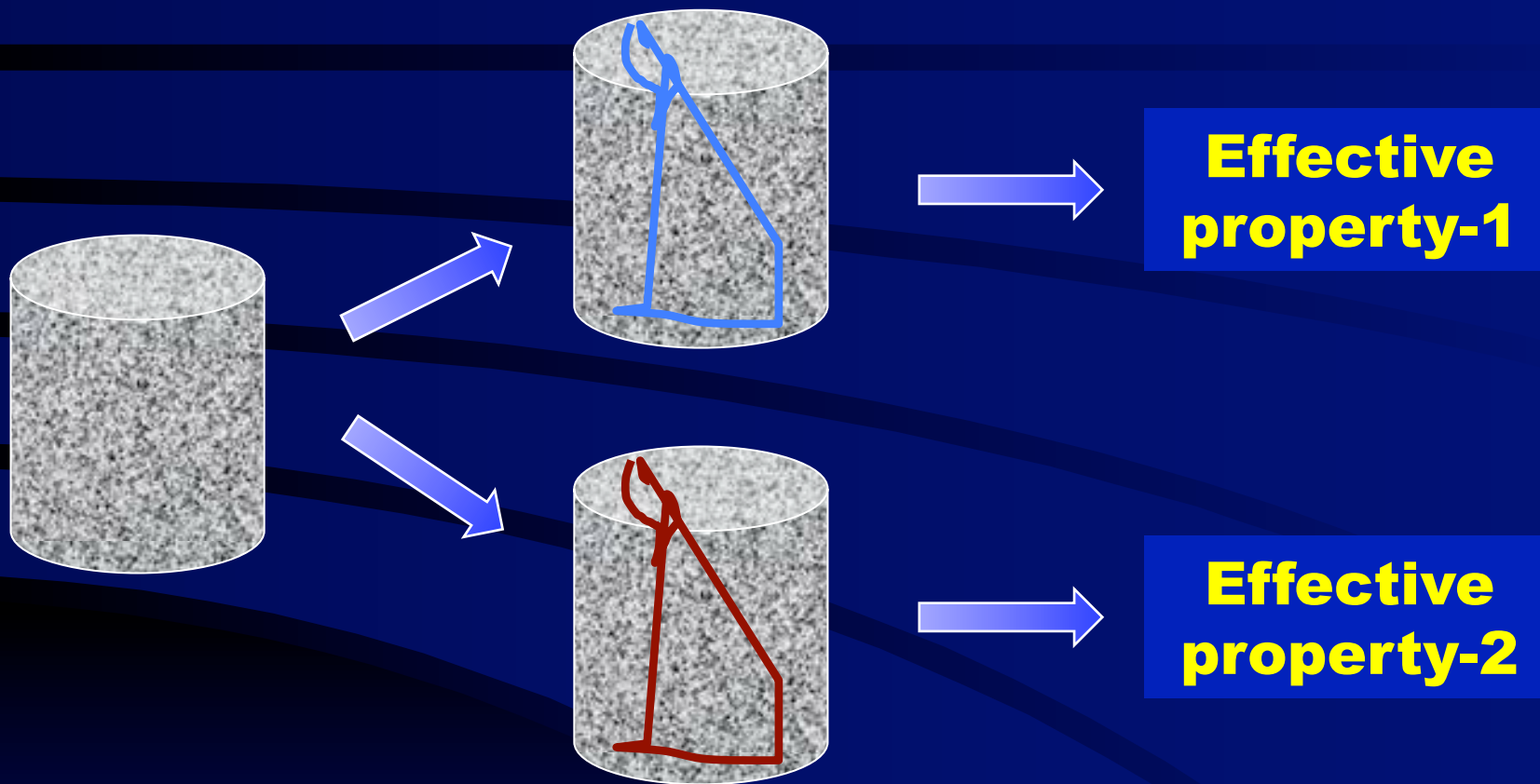


Interpretation

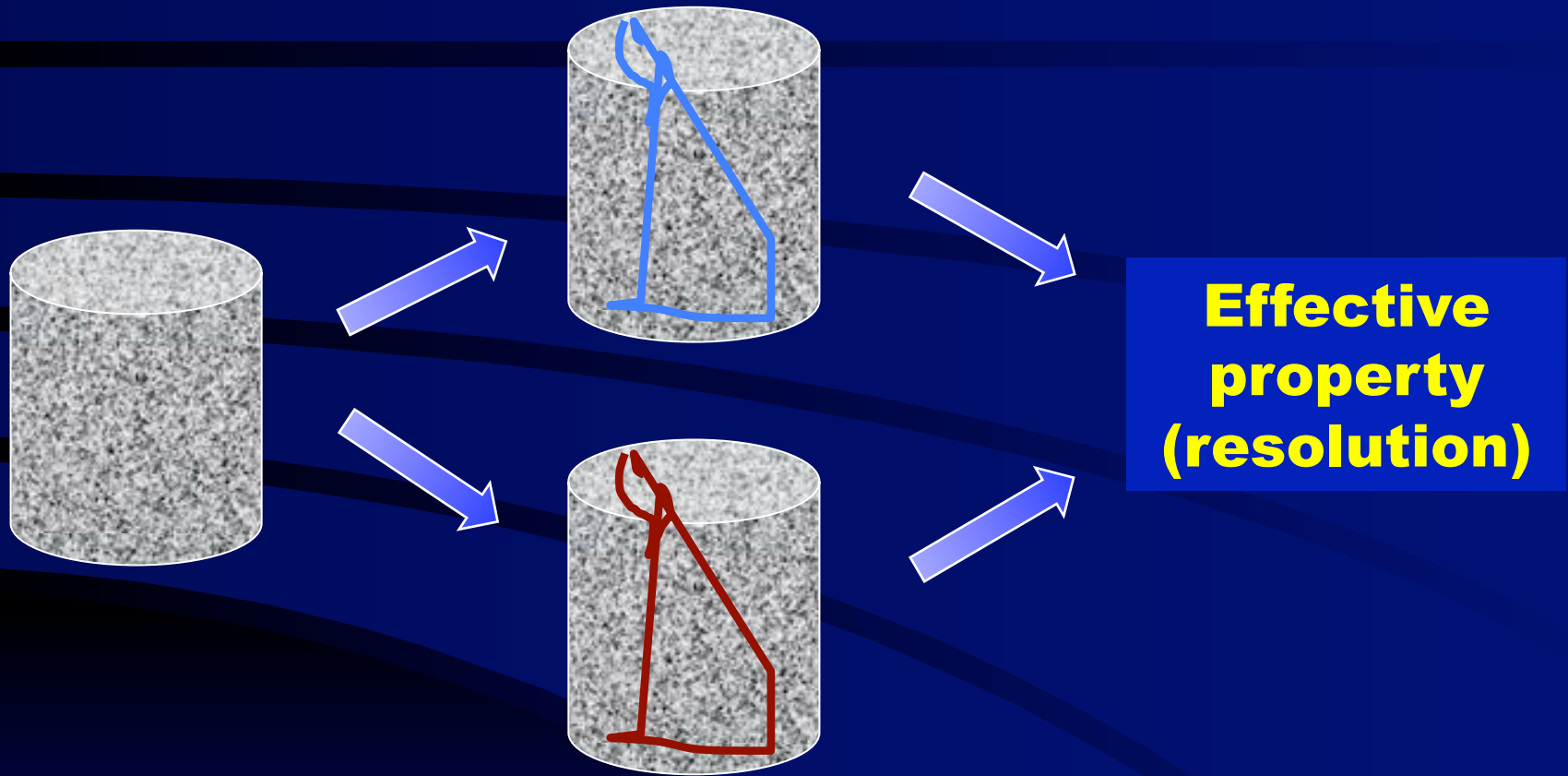


**Effective
property**

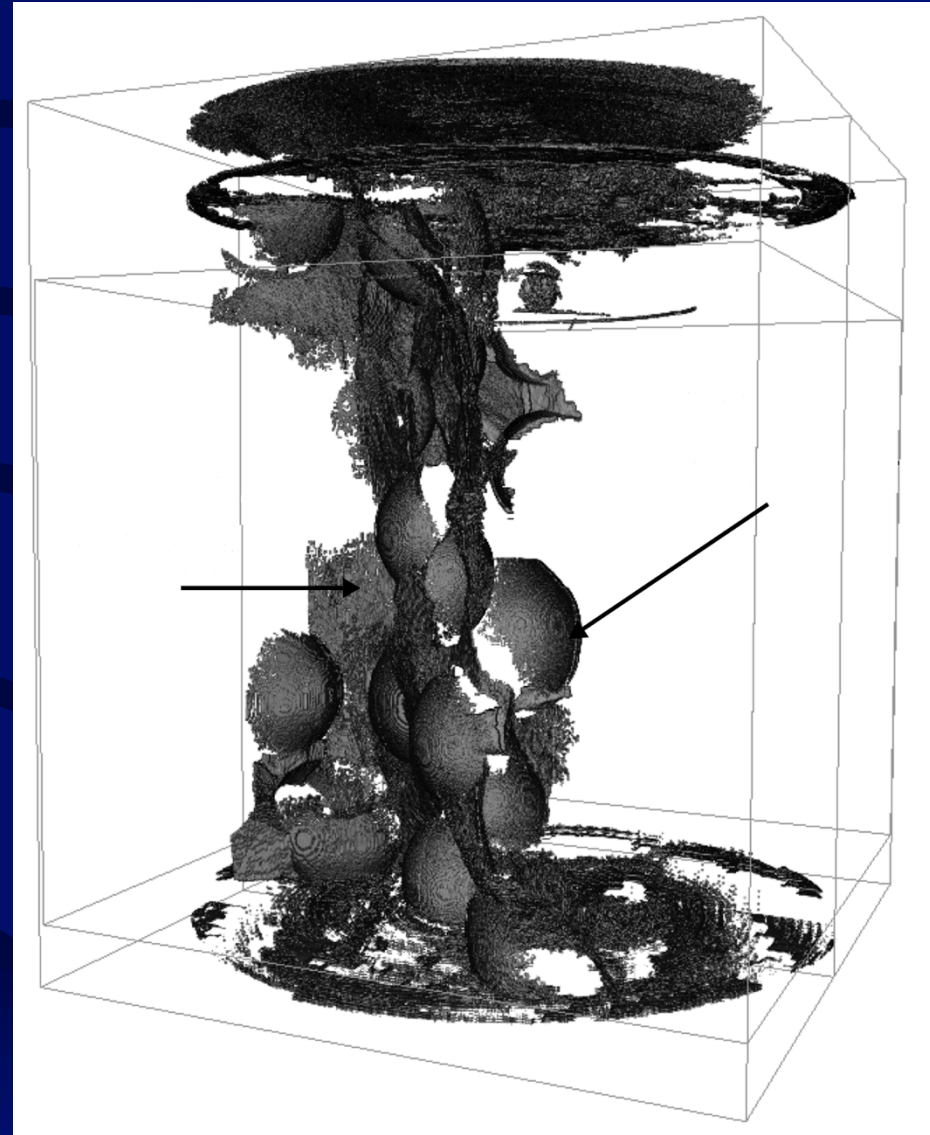
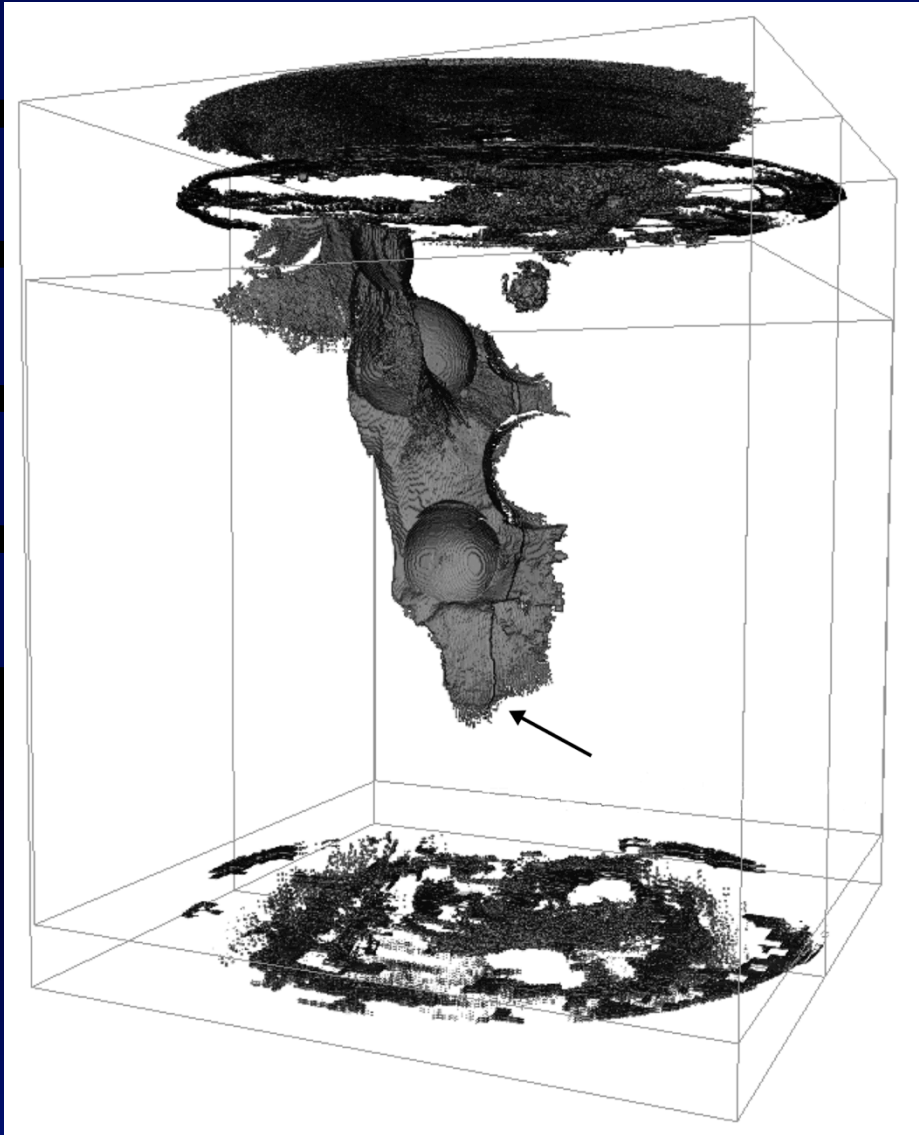
DISCUSSION



DISCUSSION



DISCUSSION



CONCLUSIONS

Image size

Resolution

Representativeness

